

Main & Minor Amendments to the Publication Draft Braintree, Colchester and Tendring Local Plans:

Section One

December 10th 2020

Showing Changes:

- MM** = Main Mods
- MM** = Additional Main Mods
- AM** = Additional Minor Amendemnts

Tendring
District Council



1 Introduction	4
The Need for a Strategic Approach	6
Spatial Portrait	7
Key Strategic^{AM6} Issues: Opportunities and Challenges	9
Vision for the Strategic Area	10
Strategic Objectives	11
Strategic Issues and Policies	12
2 Presumption in Favour of Sustainable Development	14
3 Spatial Strategy Context^{AM9}	18
4 Meeting the need for New Homes	22
5 Providing for Employment	26
6 Infrastructure and Connectivity	30
7 Creating Quality Places	44
8 Cross Boundary Garden Communities	48
9 Delivery, Implementation & Monitoring	68
10 Appendices & Maps	74
Policy SP 1 Presumption in Favour of Sustainable Development	14
Policy SP 1A Recreational disturbance Avoidance and Mitigation Strategy (RAMS)	15
Policy SP 2 Spatial Strategy for North Essex	19
Policy SP 3 Meeting Housing Needs	23
Policy SP 4 Providing for ^{AM17} Employment and Retail ^{MM9(Mod A)}	27
Policy SP 5 Infrastructure & Connectivity	38
Policy SP 6 Place Shaping Principles	45
Policy SP 7 Development & Delivery of New Garden Communities in North Essex	51
Policy SP 8 Tendring/Colchester Borders Garden Community	54
Policy SP 9 Colchester/Braintree Borders Garden Community ^{AM41}	59
Policy SP 10 West of Braintree Garden Community ^{AM42}	63

Introduction

1 Introduction

Structure of the Document - Introductory text space for each Authority (2 pages)

Braintree District Council, Colchester Borough Council and Tendring District Council and with the support of Essex County Council, have been working together to plan strategically for growth across the North Essex area.

This work has resulted in a shared Strategic Plan, (Section One) which covers major sub-regional issues and providing a guiding framework in which local policies can then be formed. The document **includes 10 policies** that start with an 'SP' reference.

The document was submitted to the Planning inspectorate in October 2017. The Plan ~~is currently~~ **has been** subject to a joint examination by Planning Inspector Mr. Roger Clews (BA MSc DipEd DipTP MRTPI).

Each of the three authorities has also submitted a separate Section Two document which relates to the specific authority only. The examination and this consultation relates only to the shared Section One.

What Happens Next?

The next key stages in the Local Plan preparation, and the planned timetable, are:

1. **Examiners report:**
2. **Full Council:**
3. **Adoption**
4. **Further work**

Shared Strategic Plan

1.1 North Essex is a vibrant and attractive place to live and work. **It has a rich archaeological, natural and built heritage that continues to influence local character, which is distinguished by its extensive legacy of human habitation from Palaeolithic times onwards.** The area has experienced significant population, housing and employment growth in recent years and this is forecast to continue. The local authorities and their partners wish to respond to this opportunity by planning positively for the area as a whole. Working together to address some of the key strategic issues in North Essex will get the best outcomes for current and future communities. In particular, it will deliver sustainable development that respects local environments and provides new jobs and essential infrastructure.^{AM2}

1.2 For these reasons Braintree District Council, Colchester Borough Council and Tendring District Council have agreed to work together to address strategic planning matters across their areas. Collectively they are known as the North Essex authorities.

1.3 The North Essex local authorities border a large number of other local authorities who will continue to be engaged and involved on an active and ongoing basis on strategic cross border issues. These authorities include Babergh Chelmsford, Maldon Mid Suffolk, St Edmundsbury, South Cambridgeshire, Uttlesford, and Suffolk and Cambridgeshire County Councils.

1.4 Essex County Council (ECC) is a key partner in its strategic role for infrastructure and service provision and as the Highway Authority, Lead Local Flood Authority, Local Education Authority and Minerals and Waste Planning Authority.

1.5 An initial outcome of this collaboration is this strategic planning chapter, which each of the local planning authorities have included in their Publication Local Plan. The Local Plans together with the Essex Minerals Local Plan and the Essex and Southend-on-Sea Waste Local Plan (prepared by ECC) and any Neighbourhood Plans, form the Development Plan for the respective areas.

The Need for a Strategic Approach

1.6 In Essex, as elsewhere, the influences of population and economic growth do not stop at administrative boundaries. Settlement patterns, migration flows, commuting and strategic infrastructure needs all have significant influences within and between local authority areas.

1.7 Local Plans are the main vehicle for conveying an area's growth requirements and how these will be accommodated. However, individual local authority boundaries cannot encapsulate the geographies of issues that transcend those boundaries. Through active and on-going collaboration the authorities can jointly plan, manage and review strategic objectives and requirements for the effective implementation of sustainable development (including minerals and waste) and enhanced environments.

1.8 The geographic and functional relationship between the authorities' areas is demonstrated by the fact that, with Chelmsford City Council, they form a single Housing Market Area (HMA) for planning purposes; and they are a major part of the Haven Gateway, an established economic partnership. Within this context, the forecast levels of future population growth together with the geography of

North Essex means that considerations for future growth will include options that have clear cross-boundary implications. These include both the expansion of existing towns and villages as well as possible new communities.

1.9 Consequently, Braintree, Colchester and Tendring, **together referred to in this plan as the North Essex Authorities**, have agreed to come together **and prepare a common Section 1 Local Plan** because of their shared desire to promote a sustainable growth strategy for the longer term; and the particular need to articulate the strategic priorities within the wider area and how these **priorities** will be addressed. Central to this is the effective delivery of planned strategic growth, particularly housing and employment development, with the necessary supporting infrastructure.^{AM3}

1.10 Uttlesford District Council, Maldon District Council as well as other neighbouring authorities, sit within separate housing market areas. However the authorities are actively and continuously engaged to ensure that cross-boundary and strategic issues are dealt with.

1.11 The Localism Act 2011 places a Duty to Co-operate on local planning authorities and other public bodies. This requires them to engage constructively, actively and on an on-going basis in the preparation of plans where this involves strategic matters. The National Planning Policy Framework (NPPF) adds to this statutory duty as it expects local planning authorities to demonstrate evidence of having co-operated effectively to plan for issues with cross-boundary impacts.

1.12 This strategic chapter **Section 1** of the authorities' Local Plans reflects the Duty to Co-operate as it concerns strategic matters with cross-boundary impacts in North Essex. **Section 2 of each plan contains policies and allocations addressing authority-specific issues.**^{AM4}

1.13 Against this background, the main purposes of this strategic chapter of the Local Plan are to:

- Articulate a spatial portrait of the area, including its main settlements and strategic infrastructure, as a framework for accommodating future planned growth;
- Provide a strategic vision for how planned growth in North Essex will be realised; set strategic objectives and policies for key growth topics;
- Set out the numbers of additional homes and jobs across the area that will be needed covering the period to 2033. The choices made, particularly in relation to the location of garden communities, will also set the framework for development well beyond the plan period; and
- Highlight the key strategic growth locations across the area and the necessary new or upgraded infrastructure to support this growth.

Spatial Portrait

1.14 Braintree, Colchester and Tendring districts are located to the north of Essex between the east coast ports and London Stansted airport. The principal towns are Braintree, Colchester and Clacton-on-Sea and a number of secondary settlements: Witham, Halstead, Wivenhoe, Tiptree, Brightlingsea, Manningtree, Harwich, Walton and Frinton. Map 10.1 identifies the settlements that link with the main road and/or rail infrastructure.

1.15 Beyond these settlements much of the area has a rural character.

1.16 The area covered by this strategic planning approach comprises a large part of the Haven Gateway, an established partnership area which is identified in a range of existing strategy and investment documents. The Haven Gateway includes the Essex administrative areas of Braintree, Colchester, Maldon and Tendring Councils and extends northwards into parts of Suffolk.

1.17 The area's strategic road and rail network is heavily used, particularly given the proximity to and connectivity with London. The principal roads are the A12 and A120, while the A130, A131, A133 and A414 also form important parts of the strategic road network.

1.18 The Great Eastern Main Line provides rail services between London Liverpool Street and the East of England, including Witham, Chelmsford, Colchester and Clacton-on-Sea. It also carries freight traffic to and from **the Haven Ports including** Harwich International Port, which handles container ships and freight transport to and from the rest of the UK. Harwich is also one of the major UK ports for ferry and cruise departures.^{AM5}

1.19 Crossrail is expected to start operating in the first part of this plan period with services commencing just south of Chelmsford in Shenfield. The opportunities that Crossrail will bring in terms of additional capacity and quicker journeys to a wider choice of destinations will be a contributor to the continued attractiveness of north Essex as a place to live and to do business.

1.20 The growing demand for the use of airports, including London Stansted, will create additional associated pressures on road and rail infrastructure. The County Council, along with South East Local Enterprise Partnership, local and national agencies and other organisations, will also need to work collaboratively with the Local Planning Authorities to ensure infrastructure meets demand for enhanced economic growth.

1.21 Braintree and Colchester are the major centres of employment within the strategic area. While there are high levels of commuting to London, many residents work and live within the area with significant commuting across borough and district boundaries, reflecting a functional economic geography.

1.22 The area has a mixed economy focused on the service sector, including wholesale and retail, business services, tourism, health and education, alongside manufacturing, logistics and construction. Due to the extensive rural area outside urban settlements, agriculture and its related industries play an important part in the overall economy.

1.23 This rurality also means that there are large areas of open countryside, including protected natural and historic landscapes. Areas of importance for nature conservation are to be found particularly along the coast and river estuaries, while the villages and towns include many built heritage assets.

1.24 A more detailed assessment of the characteristics of each area is provided in the second part of this Local Plan.

Key Strategic Issues: Opportunities and Challenges

(Key Strategic^{AM6} Issues: Opportunities and Challenges)

1.25 Due to its strong economic base, proximity to London and attractiveness as a place to live and work, North Essex has seen significant growth over recent years. The area is well-placed and connected to key growth points in the wider region including London, Cambridge and Stansted Airport and as a result is likely to continue to be a successful location for growth. In particular Braintree and Colchester have regularly exceeded planned house building targets and this is expected to continue. Planning for and managing future population growth requires an appropriate response from the local authorities to ensure that sufficient homes, employment premises and land, and supporting social and other infrastructure are provided in a sustainable way.

1.26 Notwithstanding its strong economic base and steady growth, the North Essex area faces a range of challenges, notably the need to improve economic and social conditions across the area and reduce health inequalities, pockets of deprivation, infrastructure deficits and low skills; the need to ensure that the infrastructure needed to support continued housing and jobs growth is in place at the right time; and the need to ensure that continued growth does not erode the special environment, heritage and urban assets and qualities of the area or exacerbate pressure on natural resources **continues to conserve and where possible enhance the historic and natural environment including landscape and habitat creation, and will also seek net environmental gains, possibly making use of the Defra biodiversity accounting metric 2.0 to account for possible effects.**^{AM7}

1.27 The education, health and other service needs of a growing population must be addressed, requiring careful planning to assess future needs such as pupil numbers and further adult education needs. The assessed need must in turn be translated into new or expanded education, health and other facilities which are available to meet the needs of new communities at the appropriate time. The ageing profile of residents also requires a proactive response to provide the right type of homes, including independent living and supporting services; as well as sufficient healthcare facilities to support both older residents and the population as a whole.

1.28 New development should be located and designed so that day-to-day needs of residents can be met locally and be accessible by sustainable forms of transport, including walking and cycling, and wherever possible reduce the number of car based trips. Growth will create demand for additional road and rail use with the associated need for new and upgraded infrastructure. Future planned growth provides the opportunity to address some of these infrastructure needs, although growth locations and sites need to be considered carefully with regard to the balance of providing necessary infrastructure and the viability and deliverability of development.

1.29 The NPPF expects local authorities to set out the strategic priorities for the area in the Local Plan. Of those listed in the Framework and based on the above key issues, this strategic plan chapter addresses:

- the homes and jobs needed in the area
- the provision of infrastructure for transport and telecommunications
- the provision of education, health, and community infrastructure, and
- conservation and enhancement of the natural and historic environment, including landscape

Vision for the Strategic Area

1.30 It is important that addressing growth at any spatial scale is founded on a clear vision of how and where change should occur. The vision for North Essex sets this out at a strategic level and provides a context for the more detailed vision for the growth of each individual authority's area. **The joint vision set out below should be read in conjunction with the vision for each local authority set out in Part 2 of each Local Plan.** The NPPF (paragraph 52) sets out that the supply of new homes can sometimes be best achieved through planning for larger scale development. The high housing need identified for North Essex, constraints in many existing urban areas and the desire to support a sustainable form of development in the long term, as part of the strategy for the development **has led to the** Local Plans are proposing standalone new settlements that follow the principles of Garden Communities.^{AM8}

Vision for North Essex

North Essex will be an area of significant growth over the period to 2033 and beyond, embracing positively the need to build well-designed new homes, create jobs and improve and develop infrastructure for the benefit of existing and new communities.

It will continue to be an attractive and vibrant area in which to live and work, making the most of its rich heritage, town centres, natural environment, coastal resorts, excellent educational facilities and strategic transport links which provide access to the ports, Stansted Airport, London and beyond. Rural and urban communities will be encouraged to thrive and prosper and will be supported by adequate community Infrastructure.^{MM1(Mod A)}

*Sustainable development principles will be at the core of the strategic area's response to its growth needs, balancing social, economic and environmental issues. Green and blue infrastructure and new and expanded education and health care facilities **enabling healthy and active lifestyles**^{MM1(Mod B)} will be planned and provided along with other facilities to support the development of substantial new growth; while the **undeveloped** countryside^{MM1(Mod C)} and **heritage assets** **the natural and historic environment** will be **protected conserved** and enhanced.^{MM1(Mod D)} **Key to delivering sustainable development is that new development will address the requirement to protect and enhance** ~~be informed by an understanding of the historic environment and settlement character~~^{MM1(Mod E)}*

*At the heart of our strategic vision for North Essex ~~are~~ **is a new garden communityies, to be sensitively integrated within the existing historic built and natural environment, the delivery of which is and** based on Garden City principles covered by policy SP7.*^{MM1(Mod F)}

*The garden communityies **provides an opportunity to create the right balance of jobs, housing and Infrastructure in the right locations and**^{MM1(Mod G)} will attract residents and businesses who value innovation, community cohesion and a high quality environment, and who will be provided with opportunities to take an active role in managing the garden community to ensure its continuing success.*

Residents will live in high quality, innovatively designed, contemporary homes, ^(MM1Mod H) accommodating a variety of needs and aspirations, located in well-designed neighbourhoods where they can meet their day-to-day needs. There will be a network of tree-lined streets and green spaces, incorporating and enhancing existing landscape features and also accommodating safe and attractive routes and space for sustainable drainage solutions; and leisure and recreation opportunities for both residents and visitors of the garden community^{ies}.^{MM1}

*Suitable models for the long term stewardship of community assets will be established and funded to provide long term management and governance of assets. All Garden City principles as specified in the North Essex Garden Communities Charter will be positively embraced including **where appropriate**, new approaches to delivery and partnership working and sharing of risk and reward for the benefit of the new community^{ies}. **Central to this will be the comprehensive planning and development of the garden community, and the aligned delivery of homes and supporting infrastructure.**^{MM1 (Mod I)}*

Strategic Objectives

1.31 The following strategic objectives are designed to support the vision for the area and provide a basis for the development of strategic topic-based policies that will help in achieving the vision.

1.32 4.31 Providing Sufficient New Homes – to provide for a level and quality of new homes to meet the needs of a growing and ageing population in North Essex; to achieve this by ensuring the availability of developable land in appropriate locations and that the market delivers a suitable mix of housing types and tenures.

1.33 4.31 Fostering Economic Development – to strengthen and diversify local economies to provide more jobs; and to achieve a better balance between the location of jobs and housing, which will reduce the need to travel and promote sustainable growth.

1.34 4.31 Providing New and Improved Transport & Communication Infrastructure – to make efficient use of existing transport infrastructure and to ensure sustainable transport opportunities are promoted in ~~all new development~~. **to support new and existing communities**. Where additional capacity is required in the form of new or upgraded transport infrastructure to support new development, ensuring that this is delivered in a phased & timely way to minimise the impact of new development. To ensure that enabled communication is provided as part of new developments as enabled communication is essential for modern living and broadband infrastructure and related services will be critical for business, education and residential properties.^{MM2 (Mod A)}

1.35 4.31 Addressing Education and Healthcare Needs – to provide good quality educational opportunities as part of a sustainable growth strategy, including practical vocational training and apprenticeships linked to local job opportunities. To work with partners in the NHS, Public Health and local health partnerships to ensure adequate provision of healthcare facilities to support new and growing communities.

1.36 4.31 Ensuring High Quality Outcomes – to promote greater ambition in planning and delivering high-quality sustainable new communities. Overall, new development must secure high standards of urban design and green infrastructure which creates attractive and sustainable places where people want to live and spend time. **New development needs to be informed by an understanding of the historic environment resource gained through the preparation of Historic Impact Assessments, and to conserve and enhance the significance of the heritage assets and, including any contribution made to their significance by their settings.** ^{MM2(Mod B)}

Strategic Issues and Policies

1.37 4.32 This section includes the Councils' response to the opportunities and challenges facing the wider area, in the form of strategic policies that will help to deliver the vision and objectives. These policies only cover those matters that are of strategic relevance to all three authorities. Policies that address local matters are included in the following section of the plan. **The Plan as a whole, including both Sections 1 and 2, will supersede previous Local Plan Policies and allocations upon its adoption. A list of the policies superseded by Section 1 and Section 2 of the Plan respectively is included as an appendix to each section.** ^{MM3}

Presumption in Favour of Sustainable Development

2 Presumption in Favour of Sustainable Development

Presumption in Favour of Sustainable Development

2.1 The authorities will apply a presumption in favour of sustainable development in accordance with guidance in the National Planning Policy Framework.

Policy SP 1

Presumption in Favour of Sustainable Development

When considering development proposals the Local Planning Authorities will take a positive approach that reflects the presumption in favour of sustainable development contained in the National Planning Policy Framework. They will always work pro-actively with applicants jointly to find solutions which mean that proposals can be approved wherever possible, and to secure development that improves the economic, social and environmental conditions in the area.

~~Sustainable development in North Essex will demonstrably contribute to the strategic and local vision and objectives and will accord with the policies in this Local Plan (and, where relevant, with policies in neighbourhood plans). Development that complies with the Plan in this regard will be approved without delay, unless material considerations indicate otherwise.~~

~~Where there are no policies relevant to the application or relevant policies are out of date at the time of making the decision then the Council will grant permission unless material considerations indicate otherwise – taking into account whether:~~

- ~~• Any adverse impacts of granting permission would significantly and demonstrably outweigh the benefits, when assessed against the policies in the National Planning Policy Framework taken as a whole or~~
- ~~• Specific policies in that Framework or the Plan that indicate that development should be restricted.~~^{MM4}

2.2 A Habitats Regulations Assessment (HRA) was completed for Section 1 of the Plan. The loss of off-site habitat, water quality and increased recreational disturbance were identified as issues with the potential to result in likely significant effects on European Sites, without mitigation to address the effects.

2.3 The Appropriate Assessment (AA) identified a number of avoidance and mitigation measures to be implemented, to ensure that development proposals in the Plan will not result in adverse effects on the integrity of any Special Area of Conservation, Special Protection Area or Ramsar site, and are HRA compliant.

2.4 To mitigate for the loss of off-site habitat, the AA identified the need for wintering bird surveys for the Tendring/Colchester Borders Garden Community as part of any project level development proposals and masterplanning (see also paragraph 8.4 and Policy SP8 paragraph F.21 below).

2.5 To protect water quality, the AA recommended the inclusion of policy safeguards to ensure that adequate water and waste water treatment capacity or infrastructure upgrades are in place prior to development proceeding.

2.6 Recreation activities can potentially harm Habitats Sites. The AA identified disturbance of water birds from people and dogs, and impacts from water sports/watercraft as the key recreational threats to Habitats Sites.

2.7 To mitigate for any increases in recreational disturbance at Habitats Sites, the AA identified the need for a mitigation strategy. Natural England's West Anglian Team identified the Essex coast as a priority for a strategic and proactive planning approach as it is rich and diverse ecologically, and many of the coastal habitats are designated as Habitats Sites. Consequently, 12 local planning authorities in Essex have prepared an Essex Coast Recreational disturbance Avoidance and Mitigation Strategy (RAMS).

2.8 The Essex Coast RAMS sets out specific avoidance and mitigation measures by which disturbance from increased recreation can be avoided and mitigated thus enabling the delivery of growth without adversely affecting Habitats sites. These measures are deliverable, realistic, underpinned by robust up to date evidence, precautionary and provide certainty for developers around deliverability and contributions. The Essex Coast RAMS Strategy Document was completed in 2019 and will be supported by a SPD.^{MM5}

Policy SP 1A

Recreational disturbance Avoidance and Mitigation Strategy (RAMS)

Contributions will be secured from development towards mitigation measures in accordance with the Essex Coast Recreational disturbance Avoidance and Mitigation Strategy 2018-2038 (RAMS).^{MM6}

Spatial Context (was Strategy)

3 Spatial Strategy Context^{AM9}

3.1 Future growth will contribute to maintaining and enhancing a well-connected network of sustainable settlements across North Essex. New homes, jobs, retail and leisure facilities serviced by new and upgraded infrastructure will be accommodated as part of existing settlements according to their scale, sustainability and role, and by the creation of a strategic scale new settlements embracing the principles in the North Essex Garden Community Charter. The countryside will be protected and enhanced.^{AM10}

3.2 For the majority of settlements these issues are addressed in the second part of the Local Plan dealing with each authority's area. However, it is relevant here to set out the spatial strategy at an appropriate level; spatial context of the North Essex Area as it relates to the main settlements and strategic-scale new development.^{AM11}

3.3 In Braintree District the growth will be mainly addressed via a mixture of urban extensions and new communities. Braintree town, as the largest service centre in the District, will have a number of new urban extensions. Over 4,000 new homes will be allocated in this area. The other main focus for development will be the A12 corridor with the main town of Witham and service villages of Hatfield Peverel, Kelvedon and Feering with allocations of over 2,000 new homes. Other parts of the District, including the town of Halstead, will have smaller allocations to reflect a more local need and make the best use of brownfield sites, recognising that these areas are not as sustainable. A new strategic scale garden community will be located to the west of Braintree, on the boundary with Uttlesford DC and on the eastern boundary with Colchester BC.

3.4 In Colchester Borough, the urban area of Colchester will continue to be a focus for growth due to its pre-eminent role as a centre for jobs, services and transport, with 4,000 new homes expected to be delivered over the Local Plan period. The urban area of Colchester, however, has a limited and diminishing supply of available brownfield sites, so new communities are included in the spatial hierarchy as a sustainable option for further growth of homes and jobs, in locations both to the east and west of Colchester on the borders with Tendring and Braintree Districts. Approximately 1,200 new homes will be allocated in the Rural District Centres of Tiptree, West Mersea and Wivenhoe. Smaller sustainable settlements will receive limited allocations proportionate to their role in the spatial hierarchy.

3.5 In Tendring District the spatial hierarchy promotes growth in settlements that are the most accessible to the strategic road network, public transport and offer a range of services. Clacton and Harwich with Dovercourt are classified as strategic urban settlements and will accommodate around 5,000 new homes. A new cross-boundary garden community will be located in the west of the district and to the east of Colchester. The smaller urban settlements of Frinton with Walton and Kirby Cross, Manningtree with Lawford and Mistley, Brightlingsea and Weeley will accommodate between 1,500 and 2,500 new homes. The rural service centres and smaller rural settlements will accommodate around 1,500 new homes including a windfall allowance.

3.6 The new Garden Community is identified as new a new settlement in Colchester and Tendring Section 2 settlement hierarchies. Over time the Garden Community will grow to influence the area's spatial hierarchy and will be included in the tiers underneath the sub-regional centre role played by Colchester. Future reviews of the plans will address this point, but the Garden Community will not grow to a size that will affect the spatial hierarchy within the plan period to 2033.^{AM12}

Policy SP 2

Spatial Strategy for North Essex

Existing settlements will be the principal focus for additional growth across **the North Essex Authorities area** within the Local Plan period.^{MM7(Mod A)} Development will be accommodated within or adjoining settlements according to their scale, sustainability and existing role both within each individual district and, where relevant, across the wider strategic area.

Future growth will be planned to ensure **existing** settlements maintain their distinctive character and role, **to avoid coalescence between them and to conserve their setting.**^{MM7(Mod B)} Re-use of previously-developed land within settlements is an important objective, although this will be assessed within the broader context of sustainable development principles, particularly to ensure that development locations are accessible by a choice of means of travel.

In Section 2 of its Local Plan Each local **planning** authority will identify a hierarchy of settlements where new development will be accommodated according to the role of the settlement, sustainability, its physical capacity and local needs.^{MM7(Mod C)}

Beyond the main settlements the authorities will support diversification of the rural economy and conservation and enhancement of the natural environment.

~~Three new~~ **As part of the sustainable strategy for growth, the Tendring / Colchester Borders Garden eCommunityies** will be developed and delivered ~~as part of the sustainable strategy for growth,~~ at the **broad** locations shown on Map 3-3 10.2 below **and on the Colchester and Tendring Local Plans Policies Maps.** ~~These~~ **new communityies** will provide **a** strategic locations for at least **7,500 additional homes and employment** within the Plan period in North Essex. Employment development will also be progressed with ~~it~~ **The expectation is** that substantial additional housing and employment development will be delivered in **each the Garden eCommunity** beyond the current Local Plan periods. ~~They will be planned and developed drawing on Garden City principles, with necessary infrastructure and facilities provided and a high quality of place-making and urban design~~^{MM7(Mod D)}

Meeting the need for New Homes

4 Meeting the need for New Homes

4.1 Provision of sufficient housing is critical to meet the needs of a growing population and for the effective functioning of local economies.

4.2 The North Essex authorities are committed to plan positively for new homes and to significantly boost the supply of housing to meet the needs of the area, including the need to provide a workforce for forecast jobs. To meet the requirements of national policy to establish the number and type of new homes, the authorities commissioned Peter Brett Associates to produce an Objectively Assessed Housing Need Study building on earlier work. This was first published in July 2015 and updated in November 2016. It meets the requirements of the NPPF to prepare a Strategic Housing Market Assessment (SHMA).

4.3 Detailed analysis in the report suggests that a Housing Market Area comprising Braintree, Colchester, Chelmsford and Tendring Council areas forms a sound basis for assessing housing need.

4.4 Demographic projections are the starting point for assessing how much housing will be required across an area. Based on 2014 national projections covering the period 2013 to 2037, the conclusion reached is that the objectively assessed need across the Housing Market Area is 2,999 new homes a year over the period 2013 – 2037. The total requirement across north Essex, excluding Chelmsford City Council's area, is 2,186 new homes per year.

4.5 This figure includes a figure of 550 new homes per year for Tendring. Calculation of housing need in the District is complicated by uncertainty arising from unattributed population change (UPC).

4.6 Evidence on overall levels of affordable housing provision elsewhere in the Districts will be set out in more detail within the individual Local Plans and will take account of identified needs. **The Tendring Colchester Garden Communities** needs to be mixed and balanced communities and will be expected to provide 30% affordable housing.^{AM13}

4.7 Each Garden Community will be expected to provide suitable sites for Gypsies and Travellers. Additional requirements for sites to meet District wide needs will be set out in Section Two of each District/Borough Local Plan.

4.8 The North Essex authorities will identify and update annually a supply of specific deliverable sites sufficient to provide five years' worth of housing against their individual housing requirements set out in Policy SP3 below. Each authority will incorporate an additional buffer as required by national planning policy to ensure choice and competition for land.^{AM14}

Policy SP 3

Meeting Housing Needs

The local planning authorities will identify sufficient deliverable sites, **developable sites and/or** broad locations for their respective plan period, **against to meet the housing requirements** in the table below, **and will incorporate additional provision to ensure flexibility and choice and competition for land.** ^{MM8(Mod A)}

Each authority will maintain a sufficient supply of deliverable sites to provide for at least five years' worth of housing, **plus an appropriate buffer in accordance with national policy**, and will work proactively with applicants to bring forward sites that accord with the overall spatial strategy and relevant policies in the plan. **The annual housing requirement figures set out below will be used as the basis for assessing each authority's five-year housing land supply, subject to any adjustments in Section 2 of each plan to address any undersupply since 2013.** ^{MM8(Mod B)}

The authorities will review their housing requirements regularly in accordance with national policy requirements, and in doing so will have regard to the housing needs of the wider area. ^{MM8(Mod C)}

Local Authority	Objectively Assessed Need for Housing requirement per annum	Total minimum housing supply in requirement for the plan period (2013 – 2033) ^{MM8(Mod D)}
Braintree	716	14,320
Colchester	920	18,400
Tendring	550	11,000
Total	2,186	43,720

Providing for Employment

5 Providing for Employment

5.1 A key objective for the area is to strengthen and diversify local economies to provide more jobs and to achieve a better balance between the location of jobs and housing, which will reduce the need to travel and promote sustainable growth.

5.2 Braintree District's employment is relatively focused on industrial-type sectors, including construction and manufacturing. London Stansted airport, in neighbouring Uttlesford, plays a significant role in employing residents of the District and through the indirect economic benefits associated with proximity to such a large employment hub.

5.3 Retail is the second largest sector by employment and plays an important role in sustaining the District's three key town centres. The financial and insurance sector, where Braintree District traditionally has a relatively small proportion of employment, has seen some strong growth in recent years. This may be a growth sector in the future.

5.4 Colchester is the dominant urban centre within the Essex Haven Gateway. The Borough has developed a strong economy, linked to its "central place" functions and to the town's historic character, cultural activities and the university. Major retail and leisure services are also located both within and adjacent to Colchester town.

5.5 Health, education and retail each provide over 10% of employee jobs and collectively contribute 42% to the Borough's total employment. A further six major Groups each account for between 5 – 10% of total jobs: Manufacturing; Construction; Accommodation and Food Services; Professional, Scientific & Technical; Business Administration & Support Services; and Arts, entertainment, recreation, etc.

5.6 Tendring District has a diverse economy with local employment across a range of activities. Health, retail and education are the largest sectors in terms of the number of jobs and together represent 45% of the District's total employment.

5.7 Within the western part of Tendring district, the economy and labour market of Manningtree is influenced by its relative proximity to Colchester and good transport links to London. The interior of the District is largely rural and is characterised by a high-quality environment, interspersed with small settlements.

5.8 Opportunities have been identified for Tendring to develop potential future strengths in offshore wind and the care and assisted living sector.

5.9 As part of the work to assess housing requirements, an analysis of economic forecasts was undertaken together with demographic projections to establish the inter-relationship between population growth, forecasts of new jobs and the number of new homes needed to accommodate these levels of growth. **Employment forecasts have been developed using two standard models (East of England Forecasting Model (EEFM) and Experian 2016) which forecast total job growth for each of the local authorities based on past trends. Each local authority has been advised on the most appropriate modelling figure to use in the context of reconciling job and housing demand. The forecast growth figures for the housing area for the period 2013-2037 are as set out in Policy SP4.** Employment Land

Needs Assessments have been carried out by each authority which set out the amount of employment land that is required within the Plan period. In terms of specific B use land provision, each local authority has undertaken work to establish what quantum of employment land would be required within the Plan period to meet the demand identified below for additional B use employment land. These B use employment areas are distributed between each local authority area and based on achieving a sustainable balance between jobs and the available labour force through population growth. As noted above, calculations of employment land required are affected by a range of issues that lead to different employment land portfolios for each local authority area, resulting in a proportionately greater quantum of new floorspace per job in Braintree and Tendring than in Colchester. This is a function of the prominence of higher density office requirements in Colchester and lower density logistics and industrial uses in Braintree and Tendring. The table in Policy SP4 below sets out the three authorities' employment land (B Class uses) requirements for the period 2016 – 33 for two plausible scenarios, baseline and higher growth. These two bookends provide flexibility to allow for each authority's supply trajectory to reflect their differing requirements. Site specific employment allocations meeting the needs of different sectors in each local authority are set out in section 2 of their Local Plan.^{AM15}

5.10 Braintree, Colchester and Tendring commissioned work to explore the employment opportunities associated with the development of innovative Garden Communities based on the likely demographic profile of these new communities and to develop quantified scenarios for future employment growth. The consultants concluded that assuming political commitment and proactive delivery on the part of local authorities, Garden Communities had the potential to deliver one job per household, in line with the Garden Communities charter, and to support employment growth in surrounding areas. The Tendring Colchester Border Garden Community is considered to perform the best in employment terms given the opportunities provided by its location adjacent to the University Essex. ~~, but the other two Garden communities also are well-placed to take advantage of employment opportunities in new technology-based businesses, construction of the Garden Communities, access to employment opportunities in Colchester and Braintree town centres, meeting the growing need for local services, and accommodating elements of the logistics supply chain~~^{AM16}

5.11 Employment forecasts for the three authorities accordingly factor in the longer-term aspirations for employment growth arising from the positive spin-offs associated with Garden Communities. It is important to note, however, that while job numbers can be expected to grow at a consistent rate, current trends point to overall lower requirements for additional B1 floorspace. This reflects the growth of home working enabled by enhanced digital connectivity; the continuing decline of manufacturing with its need for large floor areas; and the prevalence of 'hot desking' leading to lower requirements for office floorspace.

Policy SP 4

Providing for^{AM17} Employment and Retail^{MM9(Mod A)}

A strong, sustainable and diverse economy will be promoted across North Essex with the Councils local planning authorities^{MM9(Mod B)} pursuing a flexible approach to economic sectors showing growth potential across the Plan period.

Employment forecasts have been developed using two standard models (East of England Forecasting Model (EEFM) and Experian 2016) which forecast total job growth for each of the local authorities based on past trends. Each local authority has been advised on the most appropriate modelling figure to use in the context of reconciling job and housing demand. These figures are set out for the housing market as follows for the period 2013-2037:

Annual Jobs Forecast:

Braintree (EEFM)	490
Colchester (EEFM)	928
Tendring (Experian)	490

In terms of specific B use land provision, each local authority has undertaken work to establish what quantum of employment land would be required within the Plan period to meet the demand identified below for additional B use employment land. These B use employment areas are distributed between each local authority area and based on achieving a sustainable balance between jobs and the available labour force through population growth. As noted above, calculations of employment land required are affected by a range of issues that lead to different employment land portfolios for each local authority area, resulting in a proportionately greater quantum of new floorspace per job in Braintree and Tendring than in Colchester. This is a function of the prominence of higher density office requirements in Colchester and lower density logistics and industrial uses in Braintree and Tendring. The table below sets out the three authorities' employment land requirements for the period 2016 – 33 for two plausible scenarios, baseline and higher growth. These two bookends provide flexibility to allow for each authority's supply trajectory to reflect their differing requirements. ^{MM9(Mod C)}

In order to meet the requirements for **B-class employment office, research & development, industrial, storage and distribution** uses and to maintain appropriate flexibility in provision to meet the needs of different sectors, Section 2 of each plan will allocate employment land to ensure that provision is made within the ranges set out in the table below. ^{MM9(Mod D)}

Hectares of **B-use** employment land required **for office, research & development, industrial, storage and distribution uses:**

	Baseline (2012 Based SNPP)	Higher Growth Scenario
Braintree	23 20.9	43.3
Colchester	22.0	55.8 30
Tendring	20.0 12.0	38.0 20.0
North Essex	65ha 54.9	137.1 93.3 ^(MM9Mod E)

Infrastructure and Connectivity

6 Infrastructure and Connectivity

6.1 A coordinated and integrated approach to infrastructure planning and delivery is required to implement the vision for North Essex. Provision of appropriate and timely infrastructure to support growth will be central to the area's continuing prosperity, attractiveness and sustainability. ~~Plan-led growth that includes proposed large scale garden community infrastructure with a particular focus will be on transport , education, healthcare, and telecommunications (including broadband).~~ **Section 1 of the Local Plan highlights strategic and cross-boundary infrastructure, identifying the strategic transport infrastructure projects required to underpin delivery of the planned growth in the area including the proposed Garden Community, and sets priorities for other infrastructure requirements such as education, healthcare, digital connectivity, water supply and wastewater infrastructure and treatment. Section 2 of the Local Plan contains the infrastructure requirements for allocations made in that section of the plan. The Infrastructure Delivery Plan (IDP) provides more detail about the phasing and costing of infrastructure requirements for the Garden Communities and the Section 2 allocations required within the plan period. The infrastructure planning process will include the identification of funding sources, and may include using appropriate mechanisms of shared public sector delivery financing mechanisms and the implementation of a strategic infrastructure tariff or other suitable mechanisms to apply across North Essex.**^{AM18}

A Garden Communities^{AM19}

6.2 ~~6.23~~ The challenge in the Garden Communities~~ies~~ will be to create a community in which people move in around in a different way to ~~which~~ most of the existing towns in North Essex ~~currently~~ do.^{AM20} Networks need to give priority to people for short everyday trips to link people to work, education, retail, leisure, creating an independent safe environment.

6.3 ~~6.24~~ The new garden communities~~ies~~ will seek to manage travel demand, providing retailing, jobs, services and facilities within the site to help reduce the need to travel, and integrate and connect with the rest of North Essex and beyond through public transport **infrastructure and measures that** to promote sustainable travel patterns and reduce adverse impacts on the highway network. The North Essex Garden Communities Charter seeks to ensure that land use planning of the new communities~~ies~~ maximises the provision and use of sustainable transport internally and connects externally to key urban centres. **Given the Charter's commitment to the timely delivery of infrastructure, policies SP7-8 will ensure that key transport projects align with housing and employment delivery.**^{AM21}

6.4 ~~6.25~~ To maximise the use of public transport new forms of high quality rapid transit networks will be provided to serve existing urban centres such as Colchester and Braintree; key destinations such as the University of Essex; and key transport interchanges in North Essex. To achieve the desired step change in sustainable transport, **policy will require that** this infrastructure will need to be funded and **its delivery phased to align** with ~~provided early in~~ **with** the development phases^{AM22}.

A B Transportation and Travel^{AM23}

6.5 ~~6.2~~ North Essex is well placed in the context of connections by road, rail, air and sea to the wider region and beyond, and these connections will need to be strengthened as part of developing sustainable transport networks. ~~The A12 and A120 trunk road network form part of the Trans-European~~

~~Network carrying international vehicular traffic. The Great Eastern Main Line (GEML) and branch lines, link the major towns and cities via a high capacity, high frequency rail line radiating from London. The strategically important London Stansted Airport lies to the west within a 60km radius of key urban centres in North Essex. Access via sea is provided by the port at Harwich.~~^{AM24}

6.6 ~~6.3~~ The challenge is to provide North Essex with a sustainable transport system that provides good access to jobs and services, to support economic growth. Growth promoted through the new Local Plans, particularly via large scale new developments where delivery will extend beyond the plan period, provides an opportunity to prioritise, facilitate and deliver larger scale transport infrastructure projects that can significantly improve connectivity across and within the area. **A focus on sustainable transport in and around urban areas and the Garden Community will** and positively alter travel patterns and behaviour to reduce reliance on the private car.^{AM25}

6.7 ~~6.4~~ The Local Plans seek to improve transport infrastructure **to enable the efficient movement of people, goods** and ensure that new development is accessible by sustainable forms of transport. Measures designed to encourage people to make other sustainable travel choices such as better public transport provision, car clubs, electric vehicle charging points and provision of cycle links and **walk foot** ways will also be required to achieve such a change. It will also help to enhance air quality and improve health and well-being.^{AM26}

6.8 ~~6.5~~ Braintree, Colchester and Tendring will continue to work closely with government departments, Highways England, Essex County Council, Network Rail, rail **and bus** operators, **developers** and other partners to better integrate all forms of transport and improve roads and public transport and to promote cycling and walking. Key projects during the plan period will see improvements to the A12, A120, Great Eastern Main Line including rail services, and provision of rapid transit connections in ~~and around urban areas and the Garden Communities~~ **and the adjacent urban areas**. An integrated and sustainable transport system will be delivered that supports economic growth and helps deliver the best quality of life. ~~Although the funding for some of these improvements is not guaranteed the authorities will work with providers to ensure that investment will be made at the appropriate time to support the proposed growth.~~^{AM27}

The Inter-Urban Road Network

~~6.6~~ On the inter-urban road network, traffic levels have increased significantly in recent years with parts of the A12 around Colchester and Marks Tey carrying up to 90,000 vehicles per day, which is high for an A class trunk road.^{AM28}

~~6.7~~ Most of the inter-urban road network, particularly the capacity of the A12, is constrained by the operation of the junctions and sub-standard slips, and periods of congestion. The East of England Route Based Strategy (March 2017) provides a review of the state of the network in the East of England (including A120 Harwich to the A12 and A12 from the M25 to A14), and will inform a Strategic Road Network Initial Report (late 2017), which will outline the ambitions for the network across 2020 – 2025 (ie RIS2 period) and beyond. Consultation on plans to improve both the A12 and A120 has taken place, and the decisions made on these proposals should be informed by the planned growth, identified in Local Plans given the connection between new planned growth and the infrastructure needed to support it.^{AM29}

6.9 6.8 The A12 is set to have major improvements as part of the Government's Roads Investment Strategy (2015-2020) (RIS1 and RIS), with the aim of improving capacity and relieving congestion. The A12 is being widened between junction 19 (Chelmsford) and junction 25 (A120 interchange) to increase safety, improve journey time reliability, provide a benefit to the local road network, and in doing so support long term sustainable growth. Highways England (HE) has announced its preferred route between junction 19 and 23 (October 2019) and between junction 23 and 25 in August 2020. The A12 J19 to J25 widening scheme will go ahead as part of the Road Investment Strategy 2 (RIS2) programme, and is now a fully funded scheme. It is expected the route will be open for traffic in 2027 – 2028. RIS2 stated that the A12 scheme will need to take account of the evolving proposals for the A120 Braintree to A12 improvements, and any potential future road link to the improvements for the A120 will be incorporated into the A12 scheme. The plans were announced in December 2014 and will represent the largest investment in road infrastructure received by Essex. The RIS confirmed

- investment in a technology package for the length of the A12 from the M25 to the junction with the A14;
- phased improvement of the road to a consistent dual 3 lane standard; and
- improvement to the A12/M25 junction.

Consultation on route improvement options between 19 and junction 25 of the A12 concluded in March 2017. A decision by the Planning Inspectorate on the preferred improvement option is expected in 2019.^{AM30}

6.10 6.9 The A120 is a key east-west corridor across Essex providing access to London Stansted Airport in the west to the Harwich ports in the east and serving the economies of Braintree, Colchester and Tendring, with links to Chelmsford via the A130. Upgrading the strategically important road will unlock greater economic potential for not only North Essex, but also the county and wider South East. It will provide tangible benefits to road users, businesses and local neighbourhoods.^{AM31}

6.11 6.10 Consultation on A120 route improvement options between Braintree and & the A12 ended in March 2017. and ECC has identified a favoured route which has been recommended to Highways England and the Department of Transport for inclusion in Road Investment Strategy 2 (RIS2), which is the next funding period for the strategic road network and will make a recommendation for a preferred option to the Secretary of State for Transport and Highways England in Autumn 2017. ECC will recommend the preferred route to Government for inclusion in the next RIS, which will run from 2020 to 2025. In addition a series of short term interventions will be delivered along the route to improve safety and relieve congestion. The final alignment may influence the final boundaries and scale of the proposed Garden Community on the Colchester Braintree border. The A120 from the A12 to Harwich is subject to a Highways England Route Based Strategy and improvements to this section of road are expected over the plan period. ECC and Highways England have progressed work with regards a new and improved A120 between Braintree and the A12. The new A120 is necessary to help address the volume of existing A120 movements which by far exceeds the current standard of carriageway provision. The route will be instrumental in catering for growth in the corridor and will provide a better route for freight traffic, improve safety and relieve existing communities from a range of externalities such as through traffic, noise, severance and poor air quality. ECC has identified its favoured Route D which would join the A12 south of Kelvedon. In March 2020 the government announced its Road Investment Strategy (RIS2) which included a commitment to progressing further

development work on the A120 dualling to prepare the scheme for delivery. The A120 dualling scheme will be considered for inclusion in the RIS3 programme (2025 – 2030), and is now considered a pipeline project to be progressed by Highways England.^{AM32}

Essex County Council Route-Based Strategies

6.11 Route-based strategies are prepared and delivered by the County Council for strategic road corridors, in consultation with local authorities. The following strategies relevant to North Essex are currently being prepared for delivery post 2018/19: A131 – Chelmsford to Braintree; A131 Braintree to Sudbury; Colchester to Manningtree and A133 Colchester to Clacton. The key objective is to identify options that will support economic growth.^{AM33}

Rail

6.12 The Great Eastern Main Line (GEML) runs between London Liverpool Street and Norwich and carries a mixture of intercity services and commuter services serving the major urban settlements; and freight from the Haven Ports (Harwich and Felixstowe). Further branch lines provide connections to Braintree, Sudbury, Harwich, Clacton and Walton.^{AM34}

6.12 6.13 The Anglia Route Study prepared by Network Rail (March 2016) shows that while capacity varies along the **Great Eastern Main Line**, capacity to accommodate growth is limited and is particularly constrained in peak times from Chelmsford to London. Improvements are required along the line to accommodate growth and provide a faster more competitive service across the region.^{AM35}

6.13 6.14 The Study identifies a package of improvements necessary to respond to the need for increased capacity, which are seen as priorities to enable growth, improve services and journey reliability.

6.14 6.15 A new franchise has been **was** awarded to Greater Anglia for passenger services in the region: **New services will be provided which commencing**ed in 2018 **followed by the replacement of** and the entire fleet of trains will be replaced and in service by 2020 **to** adding capacity.^{AM36}

Bus, Public Transport, Walking and Cycling^{AM37}

6.15 6.16 Alternative forms of transport to the private car (**public transport**, walking, **and** cycling **and public transport**) to travel to work and other trips are essential in managing congestion and to accommodate sustainable growth. The levels of growth proposed in the Local Plans will require that the consequent need to travel is managed. Travel planning and smarter choices initiatives will be promoted to ensure that all residents have good access to local jobs, services and facilities, preferably by either walking or cycling. For longer trips and in rural areas where there are fewer local services and employment opportunities, public transport will be promoted. **By promoting travel by sustainable modes there are wider benefits to local people such as improved health and air quality.**^{AM38}

6.16 6.17 Within the urban areas, bus networks are available although currently underutilised. Essex County Council will address this through a new passenger transport strategy that places emphasis on improving sustainable travel modes, i.e. creating viable public transport routes that operate smoothly and potentially have priority over private car travel, thus making public transport a more appealing method of travel. **Essex County Council prioritises passenger transport (bus, minibus,**

taxi and community transport) according to the 'Getting Around in Essex Strategy'. The County Council will work in partnership with stakeholders to improve bus services and their supporting infrastructure to provide a real alternative to the private car. This will be achieved by identifying opportunities for a better bus network (routes, frequency, community based services); integrating school and commercial bus networks; the implementation of travel planning (work, business, school and health); provision of digital information measures; provision of park and ride; and supporting the growth in key commuter and inter urban routes. Conventional local bus services, and in particular improving existing services, will be an important part of promoting sustainable travel across North Essex, and will complement the new high quality rapid transit network.^{AM39}

6.17 6.18 Through implementation of the Essex Cycling Strategy (2016), Cycling Action Plans ~~have been~~ will be prepared in all the NEAs to increase cycle levels; identify safety issues; identify gaps on key routes; identify ways of closing gaps; and create better cycle connectivity to key employment areas, development zones and schools. The provision of continuous cycle routes and a coherent cycle network will encourage people to make short trips by bicycle rather than by car.^{AM40}

Achieving Sustainable Transport Policies and Delivery Mechanisms for Sustainable Transport^{AM41}

6.18 6.19 Creating development that is accessible by different modes of transport, especially walking and cycling and the use of public transport is essential to promoting sustainable development as it reduces car dependency. An important policy tool to achieve this is a people orientated transport hierarchy i.e. prioritising walking and providing access for people with mobility impairment; cycling; public transport; cars (for occupiers on site and visitors); powered two wheelers; and commercial vehicles). The modal hierarchy will be used to ensure that if not all modes can be satisfactorily accommodated, those towards the top of the hierarchy are considered first and given greater priority.

6.19 6.20 Sustainable transport management will be based on promoting modes which minimise environmental impact and promote social inclusion. It is important that developments are well located in relation to existing walking, cycling and public transport networks, and where appropriate provide enhanced facilities, as this will ensure that there is the maximum potential to use these modes as attractive alternatives to cars.

Sustainable travel & major new developments^{AM41}

~~6.21 Proposals for major new development set out in this plan provide an opportunity to create a step change in establishing sustainable travel modes, particularly in the case of the proposed new garden communities. Management of travel demand will occur through providing retailing, jobs, services and facilities within the new communities to help reduce the need to travel, and the communities will be integrated and connected with the rest of North Essex and beyond through excellent public transport links providing a step change in sustainable travel patterns and will also reduce any adverse impact they might have on the highway network. Provision for car travel will include an emphasis on the use of new technology such as electric and ultra low emission vehicles. Strategies for car usage will include car sharing, car clubs and appropriate car parking strategies.~~^{AM42}

~~6.22 To maximise the use of public transport new forms of high quality rapid transit networks will be provided to connect the proposed garden communities to existing urban centres such as Colchester and Braintree; key destinations such as the University of Essex; and key transport interchanges in~~

North Essex. To achieve the desired step change in sustainable transport this infrastructure will be identified in subsequent development plan documents and need to be funded and provided early in the development phase.^{AM43}

~~Garden Communities~~ - re-ordered^{M19}

~~6.23~~ The challenge in the Garden Communities will be to create a community in which people move in around in a different way to which most of the existing towns in North Essex currently do. Networks need to give priority to people for short everyday trips to link people to work, education, retail, leisure, creating an independent safe environment.

~~6.24~~ The new garden communities will seek to manage travel demand, providing retailing, jobs, services and facilities within the site to help reduce the need to travel, and integrate and connect with the rest of North Essex and beyond through public transport to promote sustainable travel patterns and reduce adverse impacts on the highway network. The North Essex Garden Communities Charter seeks to ensure that land use planning of the new communities maximises the provision and use of sustainable transport internally and connects externally to key urban centres.

~~6.25~~ To maximise the use of public transport new forms of high quality rapid transit networks will be provided to serve existing urban centres such as Colchester and Braintree; key destinations such as the University of Essex; and key transport interchanges in North Essex. To achieve the desired step change in sustainable transport this infrastructure will need to be funded and provided early in the development phase.

~~6.26~~ Consistent with healthy living, safe, attractive and convenient walking and cycling routes will maximise active mode choice. Connectivity will be improved across barriers such as rail lines and major roads to bring together communities. Provision for car travel will include an emphasis on the use of new technology such as electric and ultra-low emission vehicles. Strategies for car usage will include car sharing, car clubs and appropriate car parking strategies.

~~B Education~~ ~~C Social Infrastructure~~^{AM44}

Education

6.20 ~~6.27~~ New development must provide for the educational needs of new communities and this is set out in more detail within the Infrastructure Delivery Plan. This will involve the expansion of existing schools where feasible and the construction of new schools, together with provision for special educational needs, early years and childcare places. Education requirements will need to be based on a strong understanding of future pupil numbers, with co-operation between county, district and borough councils. A range of educational opportunities will need to be addressed as part of a sustainable growth strategy, including practical vocational training, apprenticeships, and further and higher education.

6.21 ~~New schools are an important place-making component of Garden Communities where early provision is usually critical in providing core social infrastructure to help a new community thrive, improve social integration and support the creation of sustainable travel patterns and a healthy environment.~~^{AM45}

G Healthcare

6.22 6.28 Local authorities have a role in creating a healthy community. The North Essex authorities will work closely with relevant stakeholders such as developers and communities to ensure that future development in North Essex takes into account the need to improve health and wellbeing of local residents (and workers) including access to appropriate health and care infrastructure. Adequate provision and range of healthcare facilities to support new and growing communities and this is set out in more detail within the Infrastructure Delivery Plan. This will be particularly important given the ageing profile of existing and future residents. There is already a need for more and better quality health care facilities across North Essex with some areas having relatively poor access to health care facilities. The Garden Community will provide the conditions for a healthy community Health through the pattern of development, good urban design, good access to local services and facilities; green open space and safe places for active play and food growing, and which is accessible by walking and cycling and public transport. Objectives will also be delivered through providing safe, attractive and convenient routes for walking and cycling, and maximising participation in active modes of travel. Support will be given to meet cross-boundary need for hospice facilities. ^{AM46}

D Broadband Digital Connectivity ^{AM47}

6.23 6.29 The NPPF indicates how high quality communications infrastructure is essential for economic growth and social well-being crucial for sustainable growth. The availability of high speed and reliable broadband, particularly in rural areas, is a key factor in unlocking new development opportunities and ensuring that people can access services online and work from home. The Government is committed to making gigabit-enabling connectivity available to all premises in the UK by 2025 and the Local Plan can contribute towards achieving this goal by requiring developers to ensure such technology is in place. ^{AM48}

6.24 6.30 Fast broadband connections and telecommunications are an increasingly important requirement to serve all development. New development should contribute to the creation of a comprehensive and effective network in both urban and rural areas to promote economic competitiveness and to reduce the need to travel. The priority is to secure gigabit-enabling connectivity the earliest availability for universal broadband coverage and fastest connection speeds for to all existing and new developments. Developers are encouraged to engage with broadband communication network providers at the earliest opportunity. Where provision is possible preference is indicated for open-access infrastructure, enabling multiple service providers access to end users. broadband must be installed on an open access basis and which will need to provide be directly accessed from the nearest British Telecom exchange and threaded through resistant tubing to enable easy access to the fibre optic cable for future repair, replacement or upgrading. ^{AM49}

E Water Supply and Wastewater

6.25 The authorities will need to work with Anglian Water, Affinity Water, Environment Agency and developers to ensure sufficient capacity and provision of an adequate water supply and foul drainage and wastewater treatment to support growing communities as outlined in the Integrated Water Management Strategy and Infrastructure Delivery Plan. This will be particularly important as water supplies continue to be threatened by climate change and pressures from continuing growth and

development. Water provisions need to be protected and it is essential for adequate water and wastewater infrastructure to be in place to accommodate the demands of growth and development in accordance with the Water Framework Directive and the Habitats Directive. The new Garden Community has the opportunity to minimise demand and wastewater generation, through exploring opportunities at both the strategic and local level.^{AM50}

Policy SP 5

Infrastructure & Connectivity

All development must be supported by the provision of the infrastructure, services and facilities that are identified to serve the needs arising from new the development.

The requirements in section A of this policy apply only to the Tendring / Colchester Borders Garden Community, whilst the remaining sections B, C, D and E apply to all allocations and development proposals in the North Essex Authorities area.

~~The following are strategic priorities for infrastructure provision or improvements within the strategic area:~~^{MM10}

A. Tendring / Colchester Borders Garden Community

1. The Development Plan Document (DPD) for the Tendring / Colchester Borders Garden Community will include:

- a) An infrastructure delivery strategy and phasing plan that sets out how infrastructure, services and facilities will be provided. Infrastructure delivery will align with each development phase and be supported by suitable mechanisms to deliver the infrastructure both on and off-site;
- b) Details of the design and delivery of Route 1 of the rapid transit system, and a programme for the integration of the garden community into the system. The route will be designed to accommodate future route enhancements and technology improvements; and
- c) Target modal shares for each transport mode and details of sustainable transport measures to support their achievement.

2. Before any planning approval is granted for development forming part of the Tendring / Colchester Borders Garden Community, the following strategic transport infrastructure must have secured planning consent and funding approval:

- a) A120-A133 link road: and
- b) Route 1 of the rapid transit system as defined in the North Essex Rapid Transit System: From Vision to Plan document (July 2019).

3. Sustainable transport measures will be provided from first occupation at the Tendring / Colchester Borders Garden Community to support the achievement of the target modal shares as defined in the DPD for the garden community.

4. Other strategic infrastructure requirements for the Tendring / Colchester Borders Garden Community are set out in sections D, E and F of Policy SP8, and will be further defined in the DPD for the garden community.^{MM11}

B. Transportation and Travel

The local planning authorities will work with government departments, Highways England, Essex County Council, Network Rail, rail and bus operators, developers and other partners to deliver the following:

- Changes in travel behaviour by applying the modal hierarchy and increasing opportunities for sustainable modes of transport that can compete effectively with private vehicles;
- A comprehensive network of segregated walking and cycling routes linking key centres of activity;
- New and improved infrastructure required to support economic growth, strategic and site-specific priorities outlined in the second part of each Local Plan
- Substantially improved connectivity by promoting more sustainable travel patterns, introducing urban transport packages to increase transport choice, providing better public transport infrastructure and services, and enhanced inter-urban transport corridors;
- Increased rail capacity, reliability and punctuality; and reduced overall journey times by rail
- Support changes in travel behaviour by applying the modal hierarchy and increasing opportunities for sustainable modes of transport that can compete effectively with private vehicles
- Prioritise **Improved urban and inter-urban** public transport, particularly in the urban areas, including, **and** new and innovative ways of providing public transport, including:
 - high quality rapid transit networks and connections in and around urban areas with links to the new garden community;
 - maximising the use of the local rail network to serve existing communities and locations for large-scale growth;
 - a bus network **providing a high-frequency, reliable and efficient service**, that is high quality, reliable, simple to use, integrated with other **transport** modes **servicing** and offers flexibility to serve areas of new demand;
 - promoting wider use of community transport schemes;
- **Increased rail capacity, reliability and punctuality, and reduced overall journey times by rail;**
- **New and** improved road infrastructure and strategic highway connections to reduce congestion and provide more reliable journey times along the A12, A120 and A133 to improve access to markets and suppliers for business, widen employment opportunities and support growth, **specifically:**
 - Improved **access to and capacity of** junctions on the A12 and other main roads to reduce congestion and address safety;

- A dualled A120 between the A12 and **from Braintree to the A12.**
- A comprehensive network of segregated walking and cycling routes linking key centres of activity contributing to an attractive, safe, legible and prioritized walking/cycling environment
- Develop **innovative strategies for the management of private car use and parking including the promotion of car clubs and car sharing, and provision of support for electric car charging points.**^{MM12}

C. Social Infrastructure

The local planning authorities will work with relevant providers and developers to facilitate the delivery of a wide range of social infrastructure required for healthy, active and inclusive communities, minimising negative health and social impacts, both in avoidance and mitigation, as far as is practicable.

Education

- Provide **sufficient school places will be provided** in the form of expanded or new primary and secondary schools together with early years and childcare facilities **that are phased with new development**, with larger developments setting aside land and/or contributing to the cost of delivering land for new schools where required.
- Facilitate and support provision of **practical vocational training, apprenticeships, and further and higher education will be provided and supported.**

Health and Wellbeing

- Ensure that **essential healthcare infrastructure will be** provided as part of new developments of appropriate scale in the form of expanded or new **healthcare facilities** including primary and acute care; pharmacies; dental surgeries; opticians; supporting community services including hospices, treatment and counselling centres.
- Require new development to maximise its positive contribution in creating healthy communities and minimise its negative health impacts, both in avoidance and mitigation, as far as is practicable.
- **The conditions for a healthy community will be provided through the pattern of development, good urban design, access to local services and facilities; green open space and safe places for active play and food growing, and which are all accessible by walking, cycling and public transport.**^{MM13}

D. Digital Connectivity

Comprehensive digital access to support business and community activity will be delivered through the roll-out of superfast ultrafast broadband across North Essex to secure the earliest availability for of full fibre connections universal broadband coverage and fastest connection speeds for all existing and new developments (residential and non-residential), where .a All new properties **will** allow for the provision for **superultrafast** broadband in order to allow connection to that network as and when it is made available.^{MM14}

E. Water & Waste water

The local planning authorities will work with Anglian Water, Affinity Water, the Environment Agency and developers to ensure that there is sufficient capacity in the water supply and waste water infrastructure to serve new development. Where necessary, improvements to water infrastructure, waste water treatment and off-site drainage should be made ahead of the occupation of dwellings to ensure compliance with environmental legislation.^{MM15}

Transport

- New and improved infrastructure required to support economic growth, strategic and site-specific priorities outlined in the second part of each Local Plan
- Substantially improved connectivity by promoting more sustainable travel patterns, introducing urban transport packages to increase transport choice, providing better public transport infrastructure and services, and enhanced inter urban transport corridors
- Increased rail capacity, reliability and punctuality; and reduced overall journey times by rail
- Support changes in travel behaviour by applying the modal hierarchy and increasing opportunities for sustainable modes of transport that can compete effectively with private vehicles
- Prioritise public transport, particularly in the urban areas, including new and innovative ways of providing public transport including;
 - high quality rapid public transit networks and connections, in and around urban areas with links to the new Garden Communities
 - maximising the use of the local rail network to serve existing communities and locations for large-scale growth
 - a bus network that is high quality, reliable, simple to use, integrated with other modes and offers flexibility to serve areas of new demand
 - promoting wider use of community transport schemes
- Improved road infrastructure and strategic highway connections to reduce congestion and provide more reliable journey times along the A12, A120, and A133 to improve access to markets and suppliers for business, widen employment opportunities and support growth
- Improved junctions on the A12 and other main roads to reduce congestion and address safety
- A dualled A120 between the A12 and Braintree
- A comprehensive network of segregated walking and cycling routes linking key centres of activity contributing to an attractive, safe, legible and prioritised walking/cycling environment
- Develop innovative strategies for the management of private car use and parking including support for electric car charging points.

Education

- Provide sufficient school places in the form of expanded or new primary and secondary schools together with early years and childcare facilities, with larger developments setting aside land and/or contributing to the cost of delivering land for new schools where required
- Facilitate and support provision of practical vocational training, apprenticeships, and further and higher education

Health

- Ensure that essential healthcare infrastructure is provided as part of new developments of appropriate scale in the form of expanded or new healthcare facilities including primary and acute care; pharmacies; dental surgeries; opticians, supporting community services including hospices, treatment and counselling centres.
- Require new development to maximise its positive contribution in creating healthy communities and minimise its negative health impacts, both in avoidance and mitigation, as far as is practicable.

Broadband

Roll-out of superfast broadband across North Essex to secure the earliest availability for universal broadband coverage and fastest connection speeds for all existing and new developments (residential and non-residential), where all new properties allow for the provision for superfast broadband in order to allow connection to that network as and when it is made available.

Creating Quality Places

7 Creating Quality Places

7.1 The North Essex area has a great variety of natural environments, and wonderful towns and villages. It is critical that new development must incorporate high standards of place-making along with urban and architectural design to respect the character of these environments. Major new developments will be planned carefully with the use of masterplans and design codes where appropriate.

7.2 Networks of green and blue infrastructure should be provided across new developments, linking new developments within existing networks of open space. These areas can be multi use, providing space for natural species and habitats as well as space for informal recreation, and walking, cycling and equestrian links.^{AM51}

7.3 This requirement for high design standards will apply across all scales of new development as well as to infrastructure projects. Enhancements to the public realm, landscaping measures and attention to architectural detail will be important features that the authorities will wish to see included in new developments. Strategic scale and more local green infrastructure can make a vital contribution to quality of place, biodiversity gains, alleviating recreational pressure, and health outcomes if properly integrated into the design and delivery of new development. The Defra biodiversity accounting metric 2.0, or future iterations of this, can be used to accurately assess habitat impacts. Sustainable Drainage Systems (SuDS) provide abundant opportunities to introduce wildflower strips and soft landscaping to a development or urban area. This not only brings an attractive feature to the area for people but acts as a wildlife corridor, connecting the rivers, ditches, hedges, verges and gardens, allowing movement of wildlife throughout an area, connecting to the wider environment and therefore greatly enhancing the biodiversity value of the site.^{AM52}

Policy SP 6

Place Shaping Principles

All new development must meet the highest **high**^{MM16(Mod A)} standards of urban and architectural design. The local authorities encourage the use of development frameworks, masterplans, **design codes**, and other design guidance documents and will **be prepared in consultation with stakeholders where they are needed to support this objective**. ~~use design codes where appropriate for strategic scale developments.~~^{MM16(Mod B)}

All new development should reflect the following **place shaping** principles, **where applicable**:^{MM16(Mod C)}

- Respond positively to local character and context to preserve and enhance the quality of existing communities **places**^{MM16(Mod D)} and their environs;
- Provide buildings that exhibit individual architectural quality within well-considered public and private realms;
- Protect and enhance assets of historical or natural value;
- **Incorporate biodiversity creation and enhancement measures**:^{MM16(Mod E)}
- Create well-connected places that prioritise the needs of pedestrians, cyclists and public transport services above use of the private car;
- ~~Where possible, p~~**Provide** a mix of land uses, services and densities with well-defined public and private spaces to create sustainable well-designed neighbourhoods;
- Enhance the public realm through additional landscaping, street furniture and other distinctive features that help to create a sense of place;
- Provide streets and spaces that are overlooked and active and promote inclusive access;
- Include parking facilities that are well integrated as part of the overall design and are adaptable if levels of private car ownership fall;
- Provide an integrated **and connected** network of multi-functional **biodiverse** public open space and green and blue infrastructure, ~~that connects with existing green infrastructure where possible~~ **thereby helping to alleviate recreational pressure on designated sites**^{MM16(Mod F)};

- Include measures to promote environmental sustainability including addressing energy and water efficiency, and provision of appropriate **water and** wastewater and flood mitigation measures **including the use of open space to provide flora and fauna rich sustainable drainage solutions;**^{MM16(Mod G)} and
- Protect the amenity of existing and future residents and users with regard to noise, vibration, smell, loss of light, **overbearing** and overlooking.^{MM16(Mod H)}

Cross Boundary Garden Communities

8 Cross Boundary Garden Communities

8.1 A key element of the spatial growth strategy for North Essex is the development of new sustainable garden communities.

8.2 Garden communities were amongst a range of options which were considered by the local authorities to deliver their housing and employment needs. A number of sites of sufficient scale to accommodate a garden community were identified through the Call for Sites, the Strategic Land Availability Assessment (SLAA) and wider evidence gathering processes by each of the local authorities. All these options were evaluated and the assessments can be seen as part of the Sustainability Appraisal.

8.3 An Appropriate Assessment has also been completed to consider the effects of proposals in Section 1 on the integrity of the European sites either alone or in combination with other plans and projects. At the Screening Stage the likely significant effects on European Sites, either alone or in combination with other plan and projects, were loss of offsite habitat, recreational impacts and water quality. These issues were further considered through the Appropriate Assessment.

- **8.4** Loss of off-site habitat - To mitigate for the loss of off-site habitat, the Appropriate Assessment identified the need for wintering bird surveys for the Tendring Colchester Borders Garden Community as part of any project level development proposals and masterplanning, to determine the sites individual importance for golden plover and lapwing and inform mitigation proposals and a commitment to mitigation and phasing of Tendring Colchester Borders Garden Community is required within the Section 1 Strategic Plan dependent on the findings of bird surveys. Depending on the findings of the wintering bird surveys, development may need to be phased to take into account the cumulative numbers of SPA birds. In the unlikely but possible event that cumulative numbers of SPA birds affected are likely to exceed the threshold of significance (i.e >1% of the associated European Site), appropriate mitigation in the form of habitat creation and management in perpetuity, either on-site or through provision of strategic sites for these species elsewhere, will be required. Where that mitigation requires the creation and management of suitably located habitat, feeding productivity for these SPA species should be maximised, and such mitigatory habitat would need to be provided and fully functional prior to development which would affect significant numbers of SPA birds.^{MM17}
- **8.5** Recreational Impacts - To mitigate for any increase in recreational pressures at the European sites, the Appropriate Assessment recommended the production for Recreational Avoidance and Mitigation Strategies (RAMS) for the Colne & Blackwater, Stour and Orwell SPAS/Ramsar sites and Essex Estuaries SAC.
- **8.6** Water quality – To ensure that the water quality of the European Sites are not adversely affected by growth proposals in Section 1, the Appropriate Assessment recommended the inclusion of policy safeguards to ensure that adequate water treatment capacity exists prior to developments proceeding and a commitment that the phasing of development would not exceed water and sewage infrastructure capacity and that the necessary infrastructure upgrades would be in place prior to developments coming forward.
- **8.7** The three authorities are committed to implementing the recommendations in the Section 1 Appropriate Assessment and these will be further progressed through the Strategic Growth DPDs.^{AM53}

8.4 ~~8.8~~ Due to the scale of development proposed across North Essex and the infrastructure constraints which exist in many of the existing main settlements, new garden communities were considered the most deliverable and sustainable option, providing a major long-term supply of new homes if they could be delivered to the right standards at the right time. Locations for three new garden communities were selected based on the evidence gathered and assessments undertaken.

8.5 ~~8.9~~ These new communities will accommodate a substantial amount of the housing and employment growth planned for North Essex within the plan period and beyond in a sustainable way that meets the vision and strategic objectives, and provides a quality of development and community that would not occur in the absence of a holistic approach to planning and delivery. In the absence of commitment and a policy framework that secures the principles of garden communities development in the identified locations would not be acceptable. Other options for meeting the growth would have to be considered.

~~8.10~~ ~~8.7~~ The North Essex Garden Communities will be **a** planned new settlements that respond directly to their regional, local and individual site context and opportunities to create developments underpinned by a series of interrelated principles which are based on the Town and Country Planning Association (TCPA) Garden City Principles, adapted for the specific North Essex context as set out in the North Essex Garden Communities Charter. ^{AM54}

~~8.11~~ ~~8.8~~ ~~At least two of the three garden communities will be cross-boundary, and continued close joint working between the authorities involved will be required to secure their successful delivery. Each of the authorities is committed to ensuring that the new garden communities are as sustainable and high quality as possible and that the infrastructure needed to support them is delivered at the right time. This will require the local authorities to work very closely with the landowners within the proposed garden community locations to develop and put in place a robust delivery mechanism that will ensure a fair and equitable distribution of the costs and land requirements needed to secure the ambitions for these garden communities and create a long term legacy appropriate to the scale of this ambition. The Councils have developed and incorporated Local Delivery Vehicles (LDV) that could be used to deliver the garden communities. The Councils are aware of the emerging Government proposals for locally led new town development corporations that may offer an alternative means of delivery. Other delivery models are also being considered, and an appropriate tailored approach will need to be used in relation to each community. The Councils are confident that the LDV models viable and can deliver successful and sustainable garden communities, but will continue to explore other ways of achieving the vision that offer similar levels of confidence that the right quality of development will be delivered at the right time. The North Essex Garden Communities Charter has provided a good starting point in creating a framework for this approach.~~ ^{AM55}

~~8.12~~ ~~8.9~~ As noted earlier in this Part 1 of the Local Plan, Uttlesford are in a separate housing market area and are therefore not formal partners in this Strategic Plan for North Essex. There will continue to be ongoing discussions with Uttlesford regarding the extent of the garden community at West of Braintree. The Uttlesford Issues and Options Plan published in October 2015 included an area of search to the west of Braintree. Uttlesford District Council is proposing to undertake preferred options consultation on its Local Plan in the summer of 2017 and the eventual scale of the west of Braintree option may depend on the conclusions that Uttlesford reach. ^{AM56}

~~8.13~~ ~~8.10~~ **8.6** The Garden Communities ~~ies are~~ **is** located within a Minerals Safeguarding Area. In line with the Essex Minerals Local Plan, the Mineral Planning Authority requires a Minerals Resource Assessment to be undertaken to assess if the sites contain a minerals resource that would require extraction prior to development. Should the viability of extraction be proven, the mineral shall be worked in accordance with the phased delivery of the non-mineral development. ^{AM57}

~~8.14~~ ~~8.11~~ At least two of the three garden communities will be cross-boundary, and the continued close joint working between the authorities involved will be required to secure their successful delivery. Each of the authorities is committed to ensuring that the new garden communities are as sustainable and high quality as possible and that the infrastructure needed to support them is delivered at the right time. Development Plan Documents will be developed for each of the garden communities. These will set out the design, development and delivery principles of each new community based on the principles set out in SP7 'Development and Delivery of New Garden Communities in North Essex' as well as the mechanism for attributing house completions to the local planning authorities' housing targets. ^{AM58}

~~8.15~~ Based on the partnership wording between the North Essex authorities to date and their continuing commitment to the projects, each of the three proposed garden communities is planned to deliver 2,500 dwellings during the Local Plan to 2033. Delivery of 2,500 dwellings in the cross-border garden communities, no matter where they are physically built, within the Local Plan period to 2033 will be attributed as set out in section 2 of each of the individual Local Plans, or if more dwellings are built then 50:50 between the two districts concerned. A detailed mechanism will be developed to attribute housing completions to the local planning authorities to deal with the possibility that fewer than 2,500 dwellings are completed in any of the communities during the plan period to 2033; it will be informed by the DPD and agreed through a Memorandum of Understanding. It will take into account a range of factors including;

- The resources, including finance, committed to the partnership by the councils to support delivery of high quality garden communities and achieve the projected housing delivery in both districts;
- The wider benefits of the garden communities to the districts;
- The burdens to the infrastructure of the districts generated by communities; and
- The proportion of the housing built in each district ^{AM59}

Policy SP 7

Development & Delivery of New Garden Communities in North Essex

The following ~~three~~ new garden communities ~~is~~ are proposed in North Essex at the broad location shown on Map 10.2.^{MM18(Mod A)}

Tendring/Colchester Borders, a new garden community which will deliver between 2,200 and 2,500 homes, 7 hectares of employment land and provision for Gypsies and Travellers within the Plan period (as part of an expected overall total of between 7,000 and 9,000 homes and 25 hectares of employment land to be delivered beyond 2033).^{MM18(Mod B)}

~~Colchester/Braintree Borders, a new garden community will deliver 2,500 within the Plan period (as part of an overall total of between 15,000 – 24,000 homes to be delivered beyond 2033).~~^{MM18(Mod C)}

~~West of Braintree in Braintree DC, a new garden community will deliver 2,500 homes within the Plan period (as part of an overall total of between 7,000– 10,000 homes to be delivered beyond 2033).~~^{MM18(Mod D)}

Each of these ~~The garden community~~ will be an holistically and comprehensively planned new community with a distinct identity that responds directly to its context and is of sufficient scale to incorporate a range of homes, employment, education & community facilities, green space and other uses to enable residents to meet the majority of their day-to-day needs, reducing the need for outward commuting. ~~It will be comprehensively planned from the outset, with delivery of each new community will be phased to achieve the whole development, and will be underpinned by a comprehensive package of infrastructure.~~^{MM18(Mod E)}

~~A Development Plan Document (DPD) will be prepared for the garden community, containing policies setting out how the new community will be designed, developed and delivered in phases, in accordance with the principles in paragraphs i-xiv below. No planning consent for development forming part of the garden community will be granted until the DPD has been adopted. All development forming part of the garden community will comply with these principles.~~^{MM18(Mod F)}

~~The Councils will need to be confident, before any consent is granted, that the following requirements have been secured either in the form of appropriate public ownership, planning agreements and obligations and, if necessary a local infrastructure tariff.~~

~~The design, development and phased delivery of each new garden community will conform with the following principles~~^{MM18(Mod G)}

- i. Community and stakeholder empowerment ~~participation~~ in the design and delivery of each ~~the~~ garden community from the outset and a long-term community engagement and activation strategy.^{MM19}

ii. The public sector working pro-actively and collaboratively with the private sector to design, and bring forward these garden communities, deploying new models of delivery **where appropriate** sharing risk and reward and ensuring that the cost of achieving the following is borne by landowners and those promoting the developments: (a) securing a high-quality of place-making, (b) ensuring the timely delivery of both on-site and off-site infrastructure required to address the impact of these new communities, and (c) providing and funding a mechanism for future stewardship, management, maintenance and renewal of community infrastructure and assets. **Where appropriate, developers will be expected to contribute towards publicly-funded infrastructure, including a contribution towards the A120-A133 link road.** Given the scale of and time period for development of these new garden communities, the appropriate model of delivery will **need to** secure a comprehensive approach to the delivery of each new community in order to achieve the outcomes outlined **in points (a) - (c) in this paragraph** above, avoid a piecemeal approach to development, provide the funding and phasing of both development and infrastructure, and be sustainable and accountable in the long term.^{MM20}

iii. Promotion and execution of the highest quality of planning, design and management of the built and public realm so that the Garden Communities **are** characterised as **a** distinctive places that capitalises on local assets, **respects its context**, and establishes **an** environments that promotes health, happiness and well-being. ~~This will involve developing a cascade of design guidance including concept frameworks, detailed masterplans and design codes and other guidance in place to inform and guide development proposals and planning applications. Planning applications and any local development orders or other consenting mechanisms for the garden communities will be expected to be consistent with approved design guidance~~^{MM21}

iv. Sequencing of development and infrastructure provision (both on-site and off-site) to ensure that the latter is provided ahead of or in tandem with the development it supports to address the impacts of the new garden communities, meet the needs of **its** residents and establish sustainable travel patterns. **To ensure new development does not have an adverse effect on any European Protected or nationally important sites and complies with environmental legislation (notably the Water Framework Directive and the Habitats Directive), the required waste water treatment capacity including any associated sewer connections** must be available **including any associated sewer connections** ahead of the occupation of dwellings in advance of planning consent.^{MM22}

v. Development that provides for a truly balanced and inclusive community and meets the housing needs of local people including a mix of dwelling sizes, tenures and types ~~including provision for self- and custom-built homes and provision for the aging population;~~ **and provision for Gypsies and Travellers; and that** meets the requirements of those most in need including **the provision of 30% affordable housing in each** the garden community.^{MM23}

vi. Provide and promote opportunities for employment within **the** each new community and within sustainable commuting distance of it^{MM24}

vii. Plan the new communities around a step change in integrated and sustainable transport systems for the North Essex area that put walking, cycling and rapid public transit networks and connections at the heart of growth in the area, encouraging and incentivising more sustainable active travel patterns^{MM24}

- viii. Structure the new communities to create sociable, vibrant and walkable neighbourhoods with equality of access for all to a range of community services and facilities including health, education, retail, culture, community meeting spaces, multi-functional open space, sports and leisure facilities^{MM24}
- ix. Develop specific garden community parking approaches and standards that help promote the use of sustainable transport and make efficient use of land.
- x. Create distinctive environments which are based on comprehensive assessments of relate to the surrounding environment and that celebrate natural and historic environments and systems, utilise a multi-functional green-grid to create significant networks of new green infrastructure including a new country parks at each the garden community, provide a high degree of connectivity to existing corridors and networks and enhance biodiversity^{MM25}
- xi. Secure a smart and sustainable approach that fosters climate resilience and a 21st century environment in the design and construction of each the garden community to secure net gains in local biodiversity, highest standards of energy efficiency and innovation in technology to reduce the impact of climate change, the incorporation of innovative water efficiency/re-use measures (with the aim of being water neutral in areas of serious water stress), and sustainable waste and mineral management^{MM26}
- xii. Ensure that the costs and benefits of developing a garden community are shared by all landowners, with appropriate measures being put in place to equalise the costs and land contributions
- xiii. Consideration of potential on-site mineral resources through a Minerals Resource Assessment as required by the Minerals Planning Authority.
- xiv. Establishment at an early stage in the development of the garden communities, of appropriate and sustainable long-term governance and stewardship arrangements for community assets including green space, public realm areas and community and other relevant facilities; such arrangements to be funded by the developments and include community representation to ensure residents have a stake in the long term development, stewardship and management of their community.^{MM24}

~~These principles are elaborated upon in the North Essex Garden Community Charter.~~

~~A Development Plan Document will be developed for each of the garden communities to set out the principles of their design, development and phasing as well as a mechanism to appropriately distribute housing completions to the three Councils and this will be agreed through a Memorandum of Understanding.^{MM27}~~

8.16 ~~8.13~~⁵ The following three policies relate to each of the new garden communities.^{AM2}

Policy SP 8

Tendring/Colchester Borders Garden Community

The adopted policies map identifies the broad location for the development of a new garden community of which the details and final number of homes will be set out in a Strategic Growth Development Plan Document to be prepared jointly between Colchester BC and Tendring DC and which will incorporate around 2,500 dwellings within the Plan period (as part of an overall total of between 7,000-9,000 homes) and provision for Gypsy and Travellers.^{MM28}

The Strategic Growth Development Plan Document (DPD) required for the Tendring / Colchester Borders Garden Community by Policy SP7 will define the will set out the nature, form and boundary of the new community and the amount of development it will contain. The adoption of the DPD will be contingent on the completion of a Heritage Impact Assessment carried out in accordance with Historic England guidance. The Heritage Impact Assessment will assess the impact of proposed allocations upon the historic environment, inform the appropriate extent and capacity of the development and establish any mitigation measures necessary. The document DPD will be produced in consultation with the local community and stakeholders and will include a concept plan showing the disposition and quantity of future land-uses, and give a three dimensional indication of the urban design and landscape parameters which will be incorporated into any future planning applications; together with a phasing and implementation strategy which sets out how the rate of development will be linked to the provision of the necessary social, physical and environmental infrastructure to ensure that the respective phases of the development do not come forward until the necessary infrastructure has been secured. The DPD will provide the framework for the subsequent development of more detailed masterplans and other design and planning guidance for the Tendring / Colchester Borders Garden Community. The DPD and any application for planning permission for development forming part of the garden community must be consistent with the requirements set out in this policy.^{MM29}

For the Plan period up to 2033, housing delivery from the garden community, irrespective of its actual location, will be distributed equally between Colchester Borough Council and Tendring District Council. If, after taking into account its share of delivery from the garden community, either of those authorities has a shortfall in delivery against the housing requirement for its area, it will need to make up the shortfall within its own area. It may not use the other authority's share of delivery from the garden community to make up the shortfall.^{MM30}

The DPD and any planning application will address the following principles and requirements in the design, development and delivery of the new garden community:

A. Place-Making and Design Quality

1. The development of a new garden community to high standards of design and layout drawing on its context and the considerable assets within its boundaries such as woodland, streams and changes in topography, as well as the opportunities afforded by the proximity of the University of Essex campus to create a new garden community that is innovative,

contemporary and technologically enabled, set within a strong green framework with new neighbourhood centres at its heart. It will be designed and developed to have its own identity and be as self-sustaining as possible recognising its location close to the edge of Colchester. It will secure appropriate integration with Colchester and the nearby University of Essex campus by the provision of suitable walking and cycling links and rapid public transport systems and connections to enable residents of the new community to have convenient access to town centre services and facilities in Colchester as well as Elmstead Market. Clear separation will be maintained between the new garden community and the nearby villages of Elmstead Market and Wivenhoe. Safeguarding the important green edge to Colchester will be essential with a new country park provided along the Salary Brook corridor and incorporating Churn Wood.

2. Detailed masterplans and design guidance, **based on a robust assessment of historic and natural environmental constraints and opportunities for enhancement**, will be **adopted** put in place to inform and guide development proposals and planning applications **for the garden community**. ~~Planning applications for this garden community will be expected to be consistent with approved DPDs and subsequent masterplans and design and planning guidance.~~^{MM31}

B. Housing

3. A mix of housing types and tenures including self- and custom-build and starter homes will be provided on the site, including a minimum of 30% affordable housing. The affordable housing will be phased through the development;

4. New residential development will seek to achieve appropriate densities which reflect both context, place-making aspirations and opportunities for increased levels of development around neighbourhood centres and transport hubs.

C. Employment and Jobs

5. **The garden community will make** ~~P~~provision for a wide range of job, skills and training opportunities ~~will be created in the garden community~~. **The DPD will allocate about 25 hectares of B use employment land within the garden community**. This may include **provision for B1 and/or non-B class office, research & development, light industrial and/or other** employment generating uses towards the south of the site in proximity to the existing University of Essex and Knowledge Gateway and provision for **B1, B2 and B8 businesses office, research & development, industrial, storage and distribution uses** towards the north of the site close to the A120;^{MM32}

6. High speed and reliable broadband will be provided and homes will include specific spaces to enable working from home

D. Transportation

7. A package of measures will be introduced to encourage smarter transport choices to meet the needs of the new community and maximise the opportunities for sustainable travel. **Policy SP5 requires planning consent and full funding approval for the A120-A133 link road and Route 1 of the rapid transit system to have been secured before planning approval is granted for any development at the garden community.**

Additional transport priorities including the provision of a network of footpaths, cycleways and bridleways to enhance permeability within the site and to access and to access the adjoining areas; development of a public rapid transit system connecting the garden community to Essex University and Colchester town centre; park and ride facilities and other effective integrated measures to mitigate the transport impacts of the proposed development on the strategic and local road network. Longer term transport interventions will need to be carefully designed to minimise the impacts on the strategic and local road **transport** network and fully mitigate any environmental or traffic impacts arising from the development. These shall include bus (or other public transit provisions) priority measures between the site, University of Essex, Hythe station and Colchester Town Centre;^{MM33}

8. Foot and cycle ways shall be provided throughout the development and connecting with the surrounding urban areas and countryside, including seamlessly linking key development areas to the University of Essex, Hythe station and Colchester Town Centre;

9. Primary vehicular access to the site will be provided off the A120 and A133. **Any other road improvements required to meet needs arising from the garden community will be set out in the DPD and further defined as part of the masterplanning process.**^{MM34}

10. Other specific transport-related infrastructure requirements identified through the Strategic Growth Development Plan Document and masterplans for this garden community will be delivered in a phased manner.

E. Community Infrastructure

11. District and neighbourhood centres of an appropriate scale will be provided to serve the proposed development. The centres will be located where they will be easily accessible by walking, cycling and public transit to the majority of residents in the garden community.

12. Community meeting places will be provided within the local centres.

13. **Increased primary healthcare facilities capacity** will be provided to serve the new development **as appropriate. This may be by means of new infrastructure or improvement, reconfiguration, extension or relocation of existing medical facilities.**^{MM35}

14. A secondary school, primary schools and early-years facilities will be provided to serve the new development;

15. A network of multi-functional green infrastructure will be provided within the garden community incorporating key elements of the existing green assets within the site. It will include community parks, allotments, a new country park, the provision of sports areas with associated facilities; and play facilities;

16. Indoor leisure and sports facilities will be provided with the new community, or contributions made to the improvement of off-site leisure facilities to serve the new development

F. Other Requirements

17. The delivery of smart, innovative and sustainable water efficiency/re-use solutions that fosters climate resilience and a 21st century approach towards water supply, water and waste water treatment and flood risk management. Taking a strategic approach to flood risk through the use of Strategic Flood Risk Assessments and the updated Climate Projections 2019 and identifying opportunities for Natural Flood Risk Management. Provision of improvements to waste water treatment plant including an upgrade to the Colchester Waste Water Treatment Plan and off-site drainage improvements aligned with the phasing of the development within the plan period and that proposed post 2033. To ensure new development does not have an adverse effect on any European Protected or nationally important site and complies with environmental legislation (notably the Water Framework Directive and the Habitats Directive), the required waste water treatment capacity **including any associated sewer connections** must be available ahead of the occupation of dwellings.^{MM36}

~~18. **Provision, management and on-going maintenance of sustainable surface water drainage measures to manage and mitigate the risk of flooding on site and which will reduce the risk of flooding to areas downstream or upstream of the development. To ensure new development does not have an adverse effect on any European Protected or nationally important sites and complies with environmental legislation (notably the Water Framework Directive and the Habitats Directive), the required waste water treatment capacity including any associated sewer connections must be available ahead of the occupation of dwellings.**~~^{MM37}

19. **18** Landscape buffers between the site and existing development in Colchester, Wivenhoe and Elmstead Market;

20. **19** Conserve and where appropriate enhance the significance of heritage assets (including any contribution made by their settings) both within and surrounding the site. Designated heritage assets within the garden community area include Grade II listed Allen's Farmhouse, Ivy Cottage, Lamberts, and three buildings at Hill farmhouse. Designated heritage assets nearby include the grade I listed Church of St Anne and St Lawrence, grade II* listed Wivenhoe House, Elmstead Hall and Spring Valley Mill and numerous grade II listed buildings as well as the grade II listed Wivenhoe Registered Park and Garden. Harm to the significance of a designated heritage asset should be avoided in the first instance.^{MM38}

~~20.21~~ **20** Avoidance, Protection and/or enhancement of heritage and biodiversity assets within and surrounding the site; including Bullock Wood SSSI, Ardleigh Gravel Pits SSSI, Wivenhoe Pits SSSI and Upper Colne Marshes SSSI and relevant European protected sites. Contributions will be secured towards mitigation measures in accordance with the Essex Coast Recreational disturbance Avoidance and Mitigation Strategy. Wintering bird surveys will be undertaken at the appropriate time of year as part of the DPD preparation to identify any offsite functional habitat. Should any be identified, development must firstly avoid impacts. Where this is not possible, development must be phased to deliver habitat creation and management either on- or off-site to mitigate any significant impacts. Any such habitat must be provided and fully functional before any development takes place which would affect significant numbers of SPA birds.^{MM39}

21. ~~22~~ **21** Provision of appropriate buffers along strategic road and rail infrastructure to protect new development

22.23 22 Provision of appropriate design and infrastructure that incorporates the highest standards of innovation in energy efficiency and technology to reduce impact of climate change, water efficiency (with the aim of being water neutral in areas of serious water stress), and sustainable waste / recycling management facilities.

23.24 23 Measures to support the development of the new community including provision of community development support workers (or other provision) for a minimum of ten years from initial occupation of the first homes and appropriate community governance structures

24.25 24 Establishment at an early stage in the development of the garden community, of appropriate and sustainable long-term governance and stewardship arrangements for community assets including green space, public realm areas and community and other relevant facilities; such arrangements to be funded by the development and include community representation to ensure residents have a stake in the long term development, stewardship and management of their community.

26 25 Allocation of additional land within the garden community, to accommodate University expansion, which is at least equivalent in size to the allocation in the Colchester Local Development Framework Site Allocations document October 2010.^{MM40}

Policy SP 9

Colchester/Braintree Borders Garden Community

The adopted policies map identifies a strategic area for development of a new garden community of which the details and final number of homes will be set out in a Strategic Growth Development Plan Document to be prepared jointly between Colchester BC and Braintree DC and which will incorporate provision of around 2,500 dwellings within the Plan period (as part of an overall total of between 15,000 to 24,000 homes) and provision for Gypsy and Travellers:

The Strategic Growth DPD will set out the nature, form and boundary of the new community. The document will be produced in consultation with stakeholders and will include a concept plan showing the disposition and quantity of future land uses, and give a three dimensional indication of the urban design and landscape parameters which will be incorporated into any future planning applications; together with a phasing and implementation strategy which sets out how the rate of development will be linked to the provision of the necessary social, environmental and physical infrastructure to ensure that the respective phases of the development do not come forward until the necessary infrastructure has been secured. The DPD will provide the framework for the subsequent development of more detailed masterplans and other design and planning guidance for the Colchester/Braintree Borders Garden Community.

The DPD and any planning application will address the following principles and requirements in the design, development and delivery of the new garden community:

A. Place-Making and Design Quality

1. The development of a new garden community to high standards of design and layout drawing on its context and the assets within its boundaries including streams, land drains and ditches, mature hedgerows and field boundaries, woodland, existing and re-established habitats, and historic buildings. A mixed use district centre will provide a vibrant heart to this new community supplemented by neighbourhood centres to form foci for new neighbourhoods. The design of the community will also address the challenges offered by other features in particular the severance created by the A12 and A120 and maximise the opportunities afforded through integration with the existing community of Marks Tey, and the presence of the railway station, all underpinned by a strong green-grid of connected green space that provides great recreational opportunities for residents and connection to the wider countryside. The garden community will be designed and developed to have its own identity and be as self-sustaining as possible. Clear separation will be maintained between the new garden community and the nearby settlements of Coggeshall, Stanway, Easthorpe and Feering.

2. Detailed masterplans and design guidance will be put in place to inform and guide development proposals and planning applications. Planning applications for this garden community will be expected to be consistent with approved DPDs and subsequent masterplans and design and planning guidance.

-

B. — Housing

3. — A mix of housing types and tenures including self- and custom-build and affordable housing will be provided on the site, including a minimum of 30% affordable housing. The affordable housing will be phased through the development;

4. — New residential development will seek to achieve appropriate densities which reflect both context, place-making aspirations and opportunities for increased levels of development around neighbourhood centres and transport hubs.

C. — Employment and jobs

5. — Provision for a wide range of job, skills and training opportunities will be created in the garden community. This may include B1 and/or non B class employment generating uses around the rail station as part of mixed use urban development to provide for a wide range of local employment opportunities where appropriate;

6. — High speed and reliable broadband will be provided and homes will include specific spaces to enable working from home

D. — Transportation

7. — A package of measures will be introduced to encourage smarter transport choices to meet the needs of the new community and maximise the opportunities for sustainable travel including the provision of a network of footpaths, cycleways and bridleways to enhance permeability within the site and to access the adjoining area; development of a public rapid transit system connecting this new garden community to the wider Colchester context; development of opportunities to improve accessibility to Marks Tey rail station (or provide for its relocation to a more central location within the garden community); and effective measures to mitigate the transport impacts of the proposed development on the strategic and local road network. Longer term transport interventions will need to be carefully designed to minimise the impacts on the strategic road network and fully mitigate any environmental or traffic impacts. Other specific transport-related infrastructure requirements identified through the subsequent Strategic Growth Development Plan Document and masterplans for this garden community will be delivered in a phased manner

8. — Primary vehicular access to the site will be provided via the strategic road network.

9. — Improvements to the local road infrastructure will be necessary to mitigate adverse traffic impacts and serve the new development. These shall include bus/rapid transit priority measures between the site, Colchester and Braintree town centres, employment areas and rail stations;

10. — Foot and cycle ways shall be provided throughout the development and existing communities and surrounding countryside, including seamlessly linking key development areas to the wider network

11. — Opportunities will be explored to establish how Marks Tey rail station can be made more accessible to residents of the new community including relocation of the station to a more central location and improvement of walking, cycling and public transport links to the station.

E. — Community Infrastructure

12. — District and local centres of an appropriate scale will be provided to serve the proposed development. The centres will be located where they will be easily accessible by walking, cycling and public transit to the majority of residents in the garden community including residents of the existing Marks Tey village.

13. — Community meeting places will be provided within the district and local centres.

14. — Primary healthcare facilities will be provided to serve the new development

15. — At least one secondary school, primary schools and early-years facilities will be provided to serve the new development;

16. — A network of multi-functional green infrastructure will be provided within the garden community incorporating key elements of the existing green assets within the site. It will include community parks, allotments, a new country park and the provision of sports areas with associated facilities and play facilities;

17. — Indoor leisure and sports facilities will be provided with the new community, or contributions made to the improvement of off-site leisure facilities to serve the new development

F. — Other Requirements

18. — Provision of improvements to waste water treatment including an upgrade to the Colchester Waste Water Treatment Plant and off-site drainage improvements;

19. — Provision, management and on-going maintenance of sustainable surface water drainage measures to manage and mitigate the risk of flooding on site and which will reduce the risk of flooding to areas downstream or upstream of the development;

20. — Landscape buffers between the site and Coggeshall, Feering, Stanway and Easthorpe;

21. — Protection and/or enhancement of heritage and biodiversity assets within and surrounding the site including the SSSI at Marks Tey brick pit, Marks Tey Hall, Easthorpe Hall Farm, Easthorpe Hall and the habitats along and adjoining the Domsey Brook and Roman River corridors.

22. — Provision of appropriate buffers along strategic road and rail infrastructure to protect new development

23. — Provision of appropriate design and infrastructure that incorporates the highest standards of innovation in energy efficiency and technology to reduce impact of climate change, water efficiency (with the aim of being water neutral in areas of serious water stress), and sustainable waste / recycling management facilities.

~~24.—— Measures to support the development of the new community including provision of community development support workers (or other provision) for a minimum of ten years from initial occupation of the first homes and appropriate community governance structures~~

~~25.—— Establishment at an early stage in the development of the garden community, of appropriate and sustainable long-term governance and stewardship arrangements for community assets including green space, public realm areas and community and other relevant facilities; such arrangements to be funded by the development and include community representation to ensure residents have a stake in the long term development, stewardship and management of their community.~~^{MM41}

Policy SP 10

West of Braintree Garden Community

The adopted policies map, identifies a strategic area for development of a new garden community of which the details and final number of homes will be set out in a Strategic Growth Development Plan Document to be prepared jointly between Braintree DC and Uttlesford DC if applicable and which will incorporate provision of around 2,500 homes within the Plan period (as part of an overall total of between 7,000 – 10,000 homes) in North Essex and provision for Gypsy and Travellers

Broadfield Farm lies within the garden community search area and is an allocated minerals extraction site within the Essex County Council adopted Minerals Local Plan. The mineral extraction, restoration and after care of the minerals site will need to be planned alongside the wider development of the garden community.

The Strategic Growth DPD will set out the nature and form of the new community. The DPD will be produced in consultation with stakeholders will include a concept plan showing the disposition and quantity of future land-uses, and give a three dimensional indication of the urban design and landscape parameters which will be incorporated into any future planning applications; together with a phasing and implementation strategy which sets out how the rate of development will be linked to the provision of the necessary social and physical infrastructure to ensure that the respective phases of the development do not come forward until the necessary infrastructure has been secured. The DPD will provide the framework for the subsequent development of more detailed masterplans and other design and planning guidance for the West of Braintree Garden Community.

The DPD and any planning application will address the following principles and requirements in the design, development and delivery of the new garden community:

A. Place-Making and Design Quality

1. The development of a new garden community to high standards of design and layout drawing on its context and the assets within and close to its boundaries including Boxted Wood, Golden Grove, Rumley Wood, Pods Brook and the historic airfield. The gently sloping topography to the south of the site also affords opportunities for long distance views. These key assets will provide a context to build a new green-grid upon to provide an attractive setting for the new community and linking to the wider countryside. The new community will also address the relationship with existing communities close to its boundaries and maintain a separation between them including Great Saling, Stebbing Green and Rayne.. The garden community will be designed and developed to have its own identity and be as self-sustaining as possible.

2. Detailed masterplans and design guidance will be put in place to inform and guide development proposals and planning applications. Planning applications for this garden community will be expected to be consistent with approved DPDs and subsequent masterplans and design and planning guidance.

B. — Housing

3. — A mix of housing types and tenures including self- and custom-build and starter homes will be provided on the site, including a minimum of 30% affordable housing. The affordable housing will be phased through the development;
4. — New residential development will seek to achieve appropriate densities which reflect context, place-making aspirations and opportunities for increased levels of development around neighbourhood centres and transport hubs.

C. — Employment and jobs

5. — Employment — additional wording pending further evidence base findings. Provision for a wide range of job, skills and training opportunities will be created within the garden community. This may include space for B1, B2 and B8 businesses in the southern part of the community close to the A120 as well as on non-employment park locations throughout the Garden Community to provide for a wide range of local employment opportunities
6. High speed and reliable broadband will be provided and homes will include specific spaces to enable working from home

D. — Transportation

7. — A package of measures will be introduced to encourage smarter transport choices to meet the needs of the new community and maximise the opportunities for sustainable travel including the provision of a network of footpaths, cycleways and bridleways to enhance permeability within the site and to access the adjoining area; development of an effective public transport system; development of opportunities to improve accessibility to local rail stations; and effective measures to mitigate the transport impacts of the proposed development on the strategic and local road network. Improvements to the local road infrastructure will be necessary to mitigate adverse traffic impacts and serve the new development. These shall include bus / rapid transit priority measures between the site, Braintree town centre, rail station and employment areas including the Skyline business park and London Stansted Airport. Longer term transport interventions will need to be carefully designed to minimise the impacts on the strategic and local road network and fully mitigate any environmental or traffic impacts arising from the development.
8. — Primary vehicular access to the site will be provided via the A120 and B1256.
9. — Foot and cycle ways shall be provided throughout the development, including linking the site to Braintree town through the existing Fritch Way linear country park;
10. — Other specific transport-related infrastructure requirements identified through the Strategic Growth Development Plan Documents and masterplans for this garden community will be delivered in a phased manner.

-

E. Community Infrastructure

11. District and local centres of an appropriate scale will be provided to serve the proposed new community. The centres will be located where they will be easily accessible by walking, cycling and public transit to the majority of residents in the garden community.
12. Community meeting places will be provided within the district and local centres.
13. Primary healthcare facilities will be provided to serve the new development.
14. Secondary school, primary schools and early-years facilities will be provided to serve the new development;
15. A network of multi-functional green infrastructure will be provided within the garden community. It will include community parks, allotments, the provision of sports areas with associated facilities and play facilities;
16. Indoor leisure and sports facilities will be provided with the new community, or contributions made to the improvement of off-site leisure facilities to serve the new development

F. Other Requirements

17. Provision of improvements to waste water treatment and off-site drainage improvements;
18. Provision, management and on-going maintenance of sustainable surface water drainage measures to manage and mitigate the risk of flooding on site and which will reduce the risk of flooding to areas downstream or upstream of the development;
19. Landscape buffers between the site and Great Saling, Stebbing, Stebbing Green and Rayne;
20. Protection and/or enhancement of heritage and biodiversity assets within and surrounding the site including Great Saling Hall conservation area and areas of deciduous woodland within and adjoining the site.
21. Provision of appropriate buffers along strategic road infrastructure to protect new development
22. Provision of appropriate design and infrastructure that incorporates the highest standards of energy efficiency and innovation in technology to reduce impact of climate change, water efficiency (with the aim of being water neutral in areas of serious water stress), and sustainable waste / recycling management facilities.
23. Measures to support the development of the new community including provision of community development support workers (or other provision) for a minimum of ten years from initial occupation of the first homes and appropriate community governance structures

~~24. — Establishment at an early stage in the development of the garden community, of appropriate and sustainable long-term governance and stewardship arrangements for community assets including green space, public realm areas and community and other relevant facilities; such arrangements to be funded by the development and include community representation to ensure residents have a stake in the long term development, stewardship and management of their community.~~^{MM42}

Delivery, Implementation & Monitoring

9 Delivery, Implementation & Monitoring

9.1 The North Essex authorities will work together to deliver cross-authority strategic proposals contained in section 1 of their plans, including the garden communities. This entails consideration of appropriate models for the governance, funding and comprehensive delivery of these innovative large scale and long term growth projects in line with the principles set out in policy SP7. In view of the scale and long term nature of the proposed garden communities, the authorities intend to have a significant role in how the communities are phased and delivered and to ensure that the infrastructure and other supporting measures to support the residents of the new communities are delivered in advance of or at the same time as new homes. This should also help ensure delivery throughout different economic cycles. ^{AM60}

~~9.2 Without prejudice to the outcomes of the Local Plan approval process, the North Essex authorities have created an overarching governance body to be known as North Essex Garden Communities Limited (NEGC Ltd) to coordinate the development and delivery of the new communities. Further local delivery vehicles will be established in association with landowners for each proposed garden community with the capacity to lead the delivery of each community on a comprehensive basis and with proportionate local authority support to help secure the quality of place and delivery of infrastructure set out in the policies in this plan. In addition to strong local authority involvement and leadership, delivery of garden communities will also rely on active and sustained engagement with existing local communities and stakeholders. The Councils will explore other models of delivery if they can be confident that it will deliver the same quality and timing of outcomes for the community as a whole, both those in the new garden communities and the existing communities that will be affected.~~ ^{AM61}

9.2 9.3 The North Essex authorities will monitor these section 1 policies to ensure that they are effective and delivering the intended outcomes, including their collective implications for the area as a whole. Monitoring of Part 1 objectives and outcomes as outlined in the table below will be assessed regularly by the authorities in their annual Authority Monitoring Reports (AMR), in addition to the monitoring of the individual Part 2 of each Local Plan. It should be noted that where there is an unacceptable delay in delivery of development and/or infrastructure occurs, the local authorities will use mechanisms and powers including establishing locally-led Development Corporations and the use of Compulsory Purchase Orders, to intervene.

9.3 Table 1: Monitoring Requirements for of the Section 1^{AM63}

Part One Objectives	Part One Policies	Targets	Key Indicators in Authority Monitoring Reports
Providing sufficient new homes	SP1 Presumption in favour of Sustainable Development	Delivery of new development in accordance with the Development Plan	Record of planning decisions including appeals
Fostering economic development	SP1A Recreational Disturbance Avoidance and Mitigation Strategy	Secure contributions from development towards mitigation measures for the loss of off-site habitat	Monitor levels of mitigation contributions received
Providing new and improved infrastructure	SP2 Meeting Housing Needs Spatial Strategy for North Essex	Deliver a new Garden Communities ^{AM63} as the most sustainable options for large scale, long term growth	Local authority agreement and delivery of governance, community involvement, stewardship arrangements and funding arrangements for the new Garden Communities
Addressing education and healthcare needs	SP3 Providing for Employment Meeting Housing Needs	Deliver new housing in line with spatial strategy and Objectively Assessed Need targets	Market and affordable housing completions per annum (net)
Ensuring high quality outcomes	SP4 Infrastructure and Connectivity Employment	Deliver new employment land in line with spatial strategy and evidence base targets	Amount of floorspace development for employment and leisure by type

Part One Objectives	Part One Policies	Targets	Key Indicators in Authority Monitoring Reports
	<p>SP5 Place Shaping Principles Infrastructure and Connectivity</p>	<p>Delivery of identified infrastructure schemes including transport, education, community, healthcare, green/blue infrastructure and environmental protection</p> <p>Increase modal share of non-motorised transport</p>	<p>Identify and monitor progress of strategic infrastructure projects</p> <p>Monitor modal splits and self-containment via Census and measure traffic levels on key routes</p>
	<p>SP6 Spatial strategy for North Essex Place Shaping Principles</p>	<p>Approved DPDs, masterplans & other planning & design guidance in place for each community ^{AM63} DELETED? prior to the commencement of development it relates to of the new Garden Community. Deliver communities that are sensitively integrated into the existing historic built and natural environment</p>	<p>Monitor availability of DPDs and other planning guidance relative to the submission & determination of planning applications for the development it relates to. Planning permissions granted without objection from relevant statutory consultees and local authority specialist advisors</p>
	<p>SP7 Development and Delivery of a New Garden Communities in North Essex</p>	<p>Development and Delivery of a new Garden Communities as the most sustainable options for large scale, long term growth</p>	<p>Local authority agreement and delivery of governance, community involvement, stewardship arrangements and funding arrangements for new Garden Communities</p>

Part One Objectives	Part One Policies	Targets	Key Indicators in Authority Monitoring Reports
	SP8 Tendring/Colchester Borders Garden Community	Deliver a sustainable new community in accordance with guidance as adopted	Delivery rates of all development including supporting infrastructure as documented in housing trajectories and other monitoring data
	SP9 Colchester Braintree Borders Garden Community		
	SP10 west Braintree Garden Community		

Monitoring Requirements for Section 1

Appendices & Maps

10 Appendices & Maps

Appendix A: List of policies superseded by Section 1 of the Plan

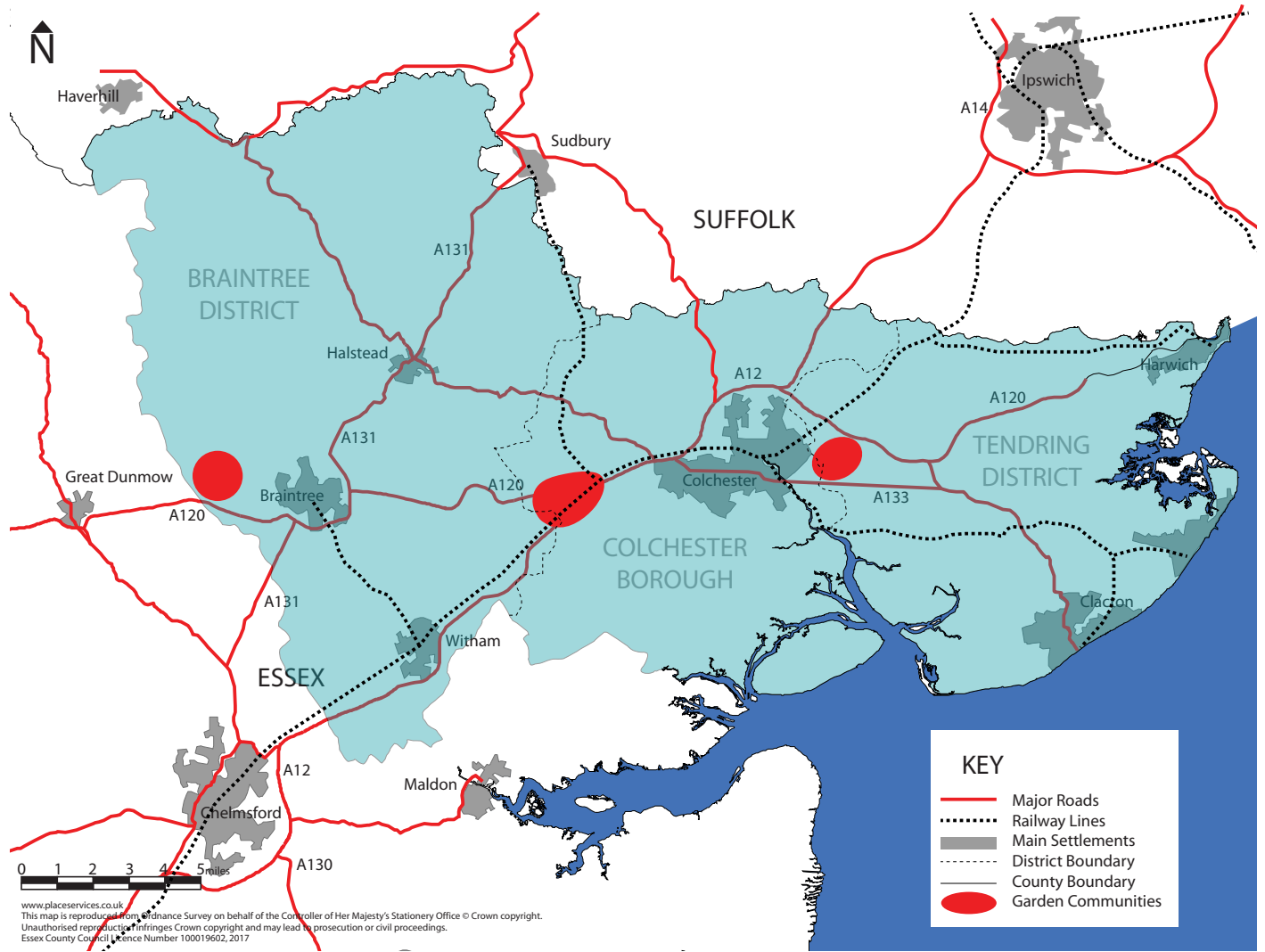
Section 1 Local Plan Policy		Policies superseded by the Section 1 Local Plan Policy		
Policy Number	Policy Title	Braintree District Council 2011 Core Strategy	Colchester Borough Council Adopted Core Strategy 2014 Focused Review	Tendring District Council Adopted 2007 Local Plan
SP1	Presumption in Favour of Sustainable Development	-	-	-
SP1A	Recreational disturbance Avoidance and Mitigation Strategy (RAMS)	-	-	-
SP2	Spatial Strategy for North Essex	CS1	H1	QL1
SP3	Meeting Housing Needs	CS3	H1	HG1
SP4	Providing for Employment	CS4	CE1	QL4
SP5	Infrastructure and Connectivity	CS11	SD2	-
SP6	Place Shaping Principles	CS9	-	QL8 / QL9 / QL10 / QL11 (in part)
SP7	Development and Delivery of New Garden Communities in North Essex	-	-	-
SP8	Tendring / Colchester Borders Garden Community	-	-	-

MM46

Appendix 1: Recreational Pressures at Essex/Suffolk European Sites

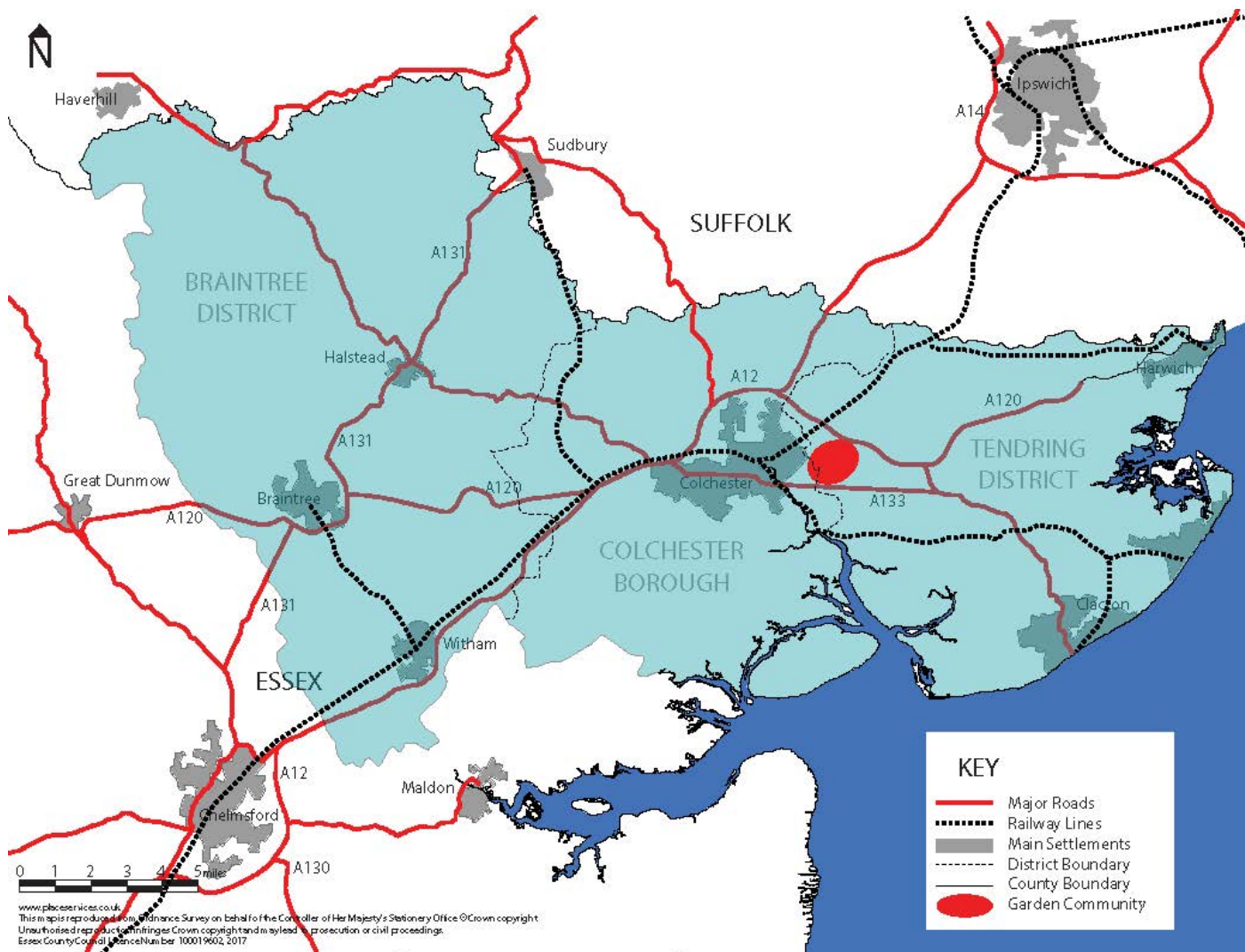
European site	Recreational Pressure
Abberton Reservoir SPA/Ramsar	Recreational disturbance not a threat at this
Blackwater Estuary SPA/Ramsar	The key threat to this site relates primarily to disturbance of water birds from people and dogs, in addition to water sports such as use of jet skis and motorboats.
Colne Estuary SPA/Ramsar	The key threat to this site relates primarily to disturbance of water birds from people and dogs, in addition to water sports such as use of jet skis and motorboats.
Hamford Water SPA/Ramsar	The key recreational threat identified at the screening stage relates primarily to disturbance of water birds from people and dogs in addition to water sports such as use of jet skis and motorboats.
Stour and Orwell Estuaries SPA/Ramsar	Breeding and overwintering waterbirds are susceptible to human disturbance from a range of land and water-based activities, including boating and watersports; walking; bait-digging; fishing; wildfowling, and military overflight training. Some activities, such as powerboating, may produce physical disturbance to habitats.
Essex Estuaries SAC	The SAC is vulnerable to physical damage which can be caused by trampling and erosion associated with terrestrial recreation and wave damage caused by water based recreation. The SAC is also vulnerable to the effects of other negative factors associated with recreation such as littering, fire and vandalism ^{AM64}

Recreational Pressures at Essex/Suffolk European Sites



Map 10.1 Garden Communities DELETED

MM43/MM44/MM45

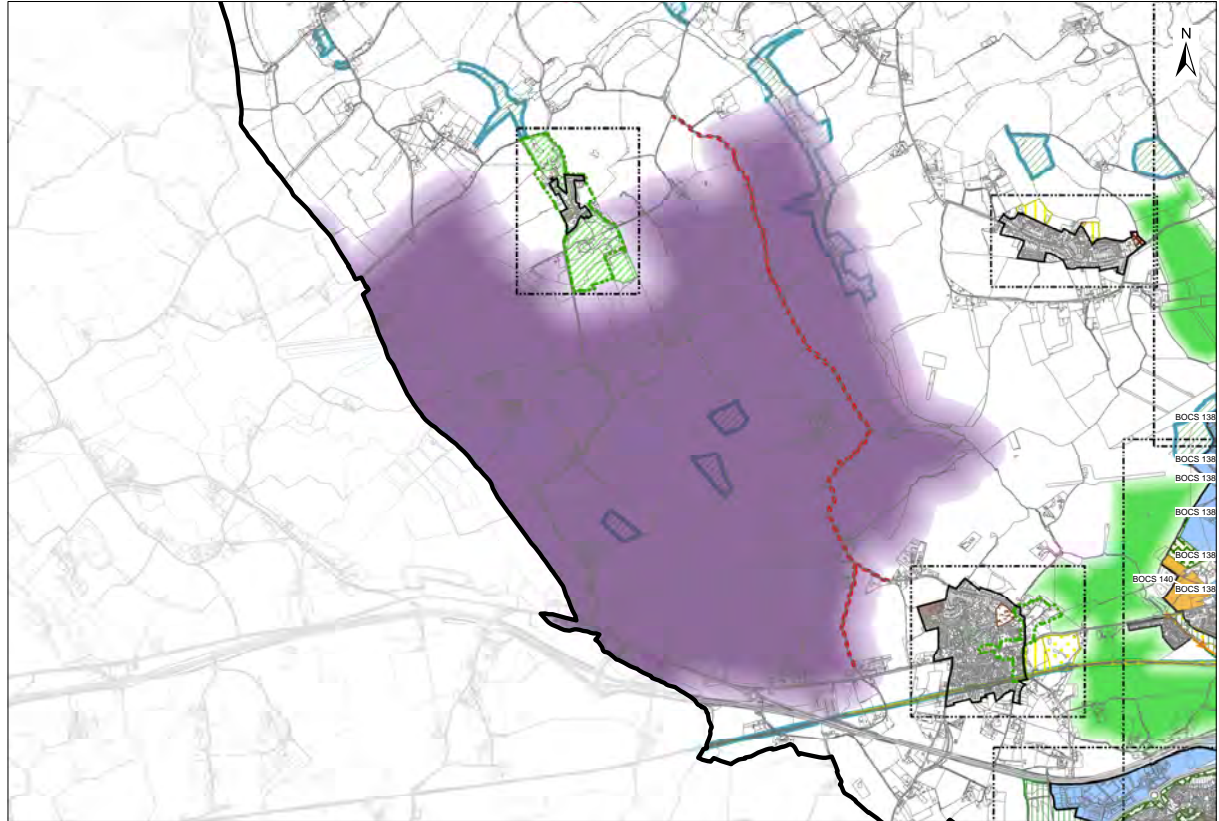


10.1 Key Diagram

MM43/MM44/MM45

West of Braintree New Garden Community. Publication Draft Local Plan.

Inset A



1:20,000

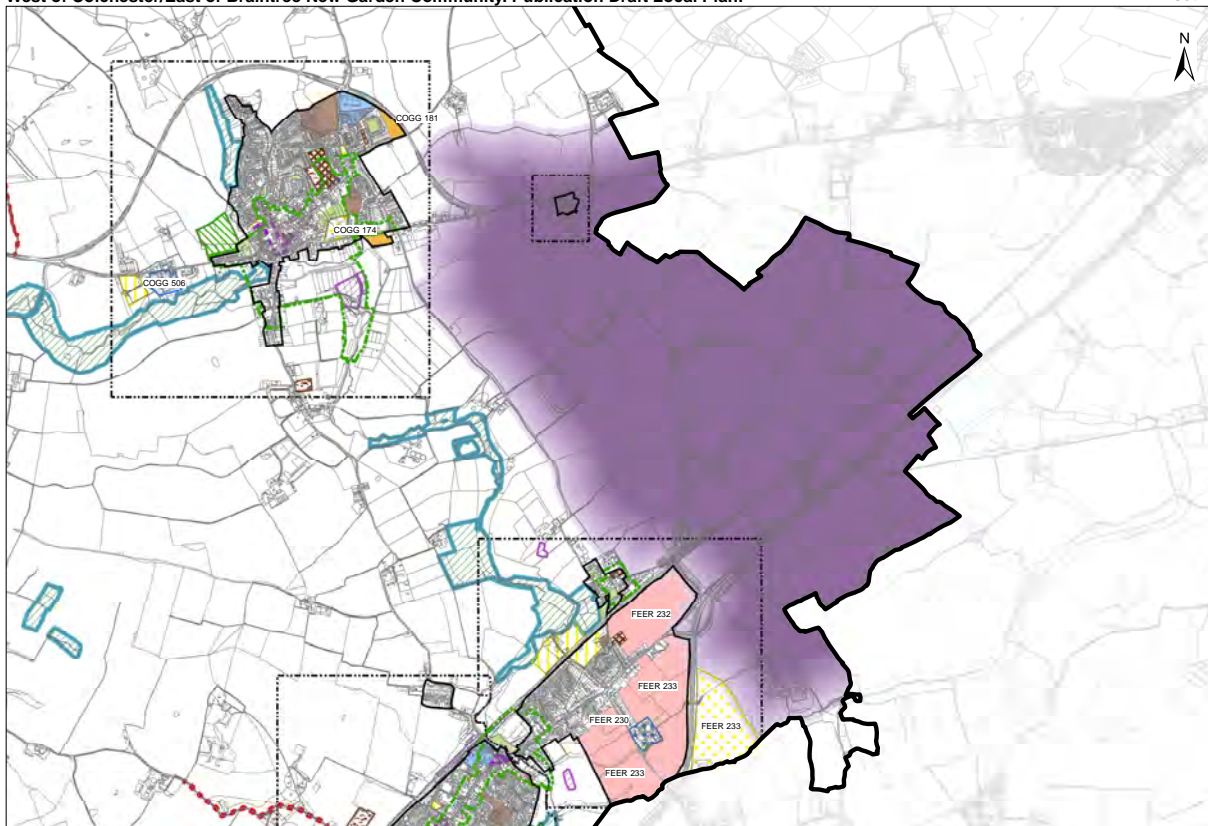
*Reproduced from the Ordnance Survey mapping with the permission of the Controller of Her Majesty's Stationery Office © Crown Copyright. Unauthorised reproduction infringes Crown Copyright and may lead to prosecutions or civil proceedings. Braintree District Council O/S Licence No. LA 100018490, 2017

Map 10.2 A - West of Braintree DELETED

MM43

West of Colchester/East of Braintree New Garden Community. Publication Draft Local Plan.

Inset B



1:20,000

*Reproduced from the Ordnance Survey mapping with the permission of the Controller of Her Majesty's Stationery Office © Crown Copyright. Unauthorised reproduction infringes Crown Copyright and may lead to prosecutions or civil proceedings. Braintree District Council O/S Licence No. LA 100018490, 2017

Map 10.3 B - Colchester/Braintree Borders DELETED

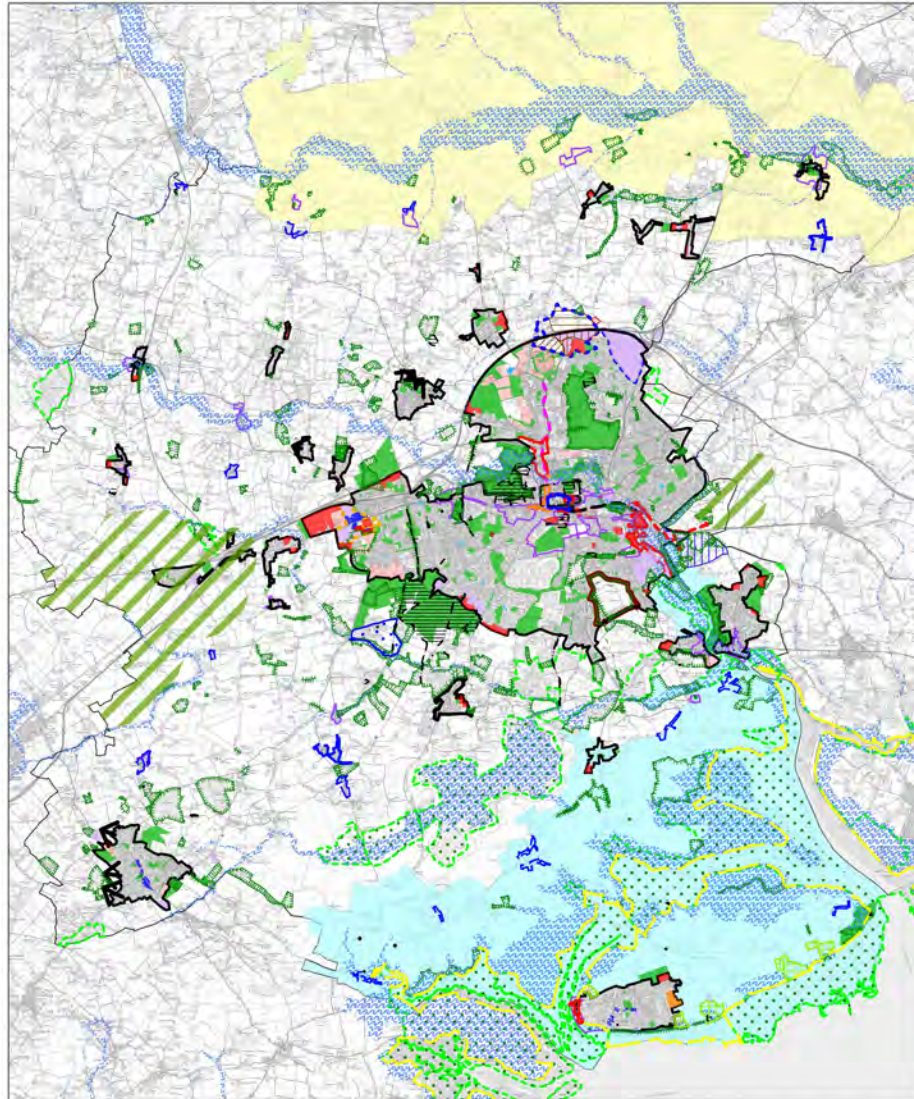
MM43

COLCHESTER BOROUGH

Local Plan Policies Map



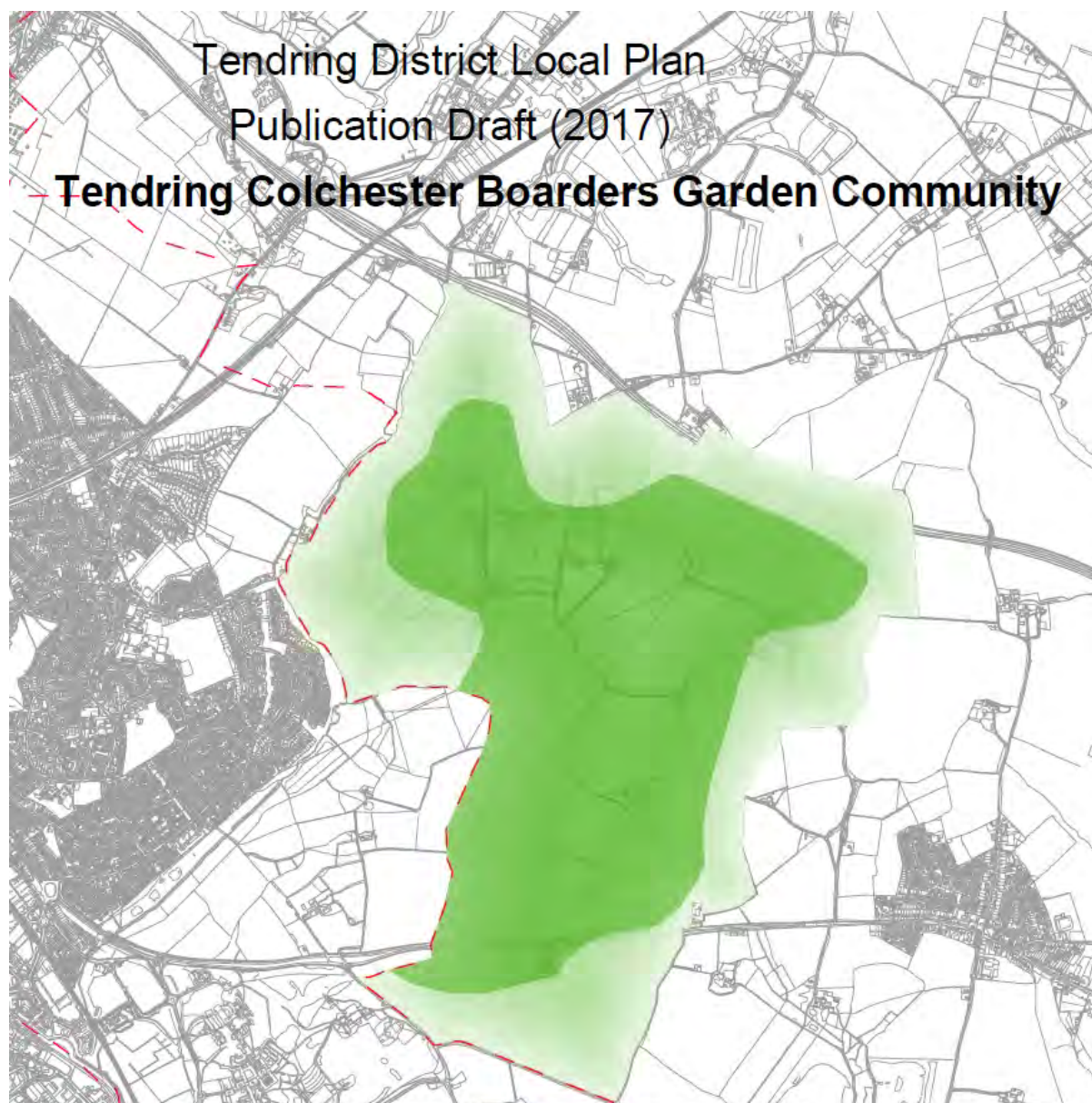
NB: see key for Borough-wide designations and respective Policies Maps for specific policy area designations (e.g. North Colchester, East Colchester, etc.).



© Crown copyright and database rights 2017 Ordnance Survey 100023706.

Map 10.4 C - Colchester REPLACED

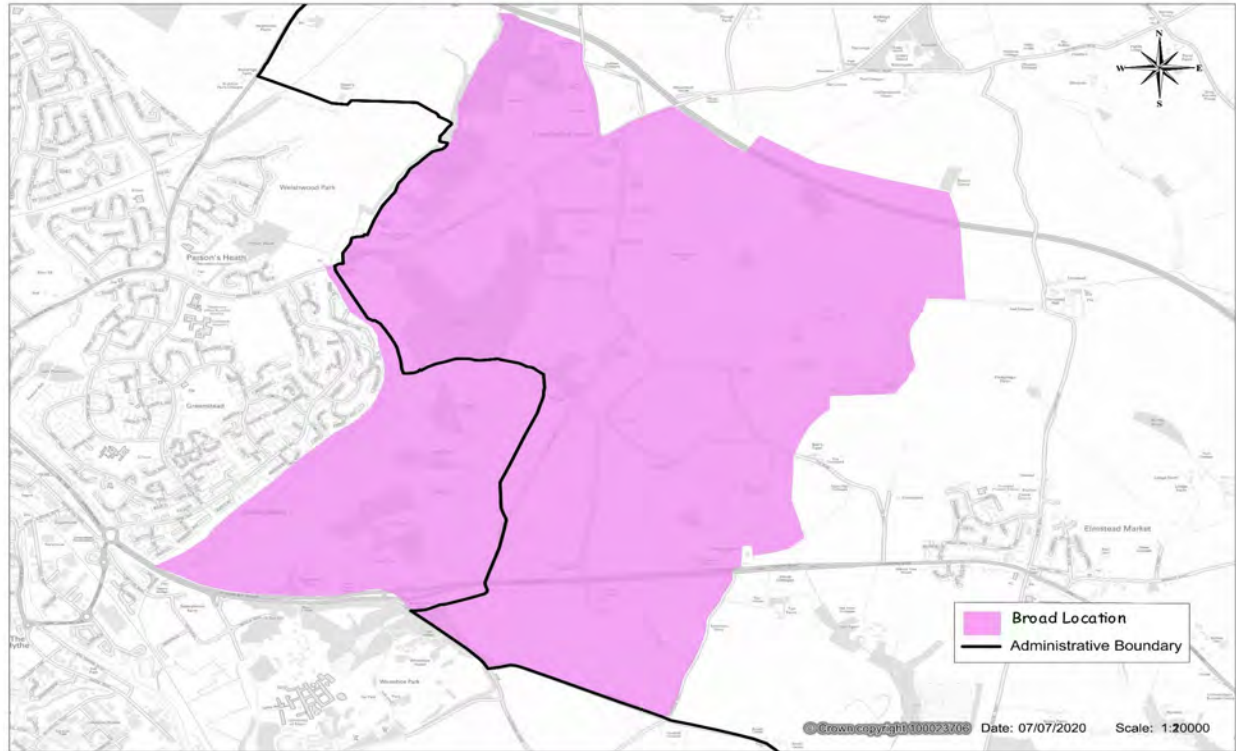
MM44



Map 10.5 Map D Tendring/Colchester Borders REPLACED

MM43/MM45

Tendring Colchester Borders Garden Community – Broad Location



10.2 Tendring Colchester Borders Garden Community - Broad Location

MM43/MM44/MM45

